

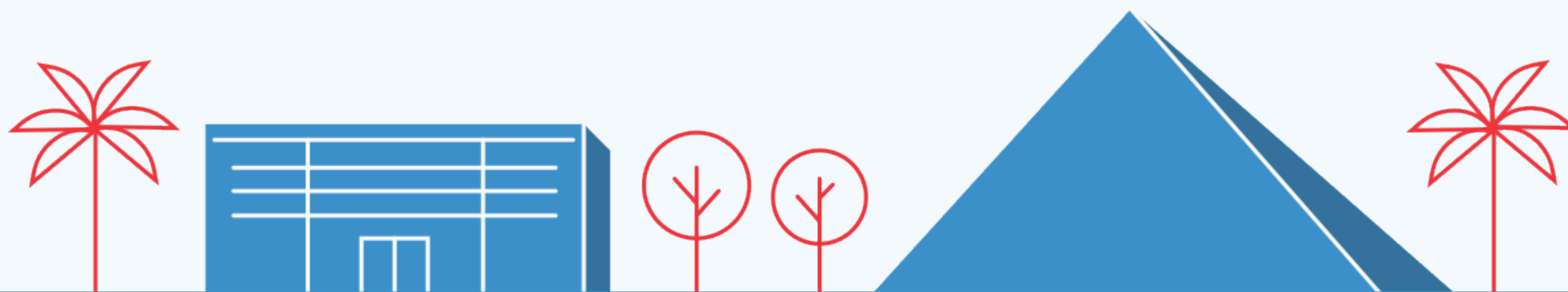


THE LONG BEACH
COLLEGE
PROMISE

SUCCESS BEGINS TODAY

MAKING THE PROMISE

The Long Beach College Promise extends the promise of a college education to every student in the Long Beach Unified School District.



AGENDA

Background

Why The Promise Matters

Structure & Leadership

Initiatives

Pathways

Outcomes

Recognition

Building a Promise

Q&A



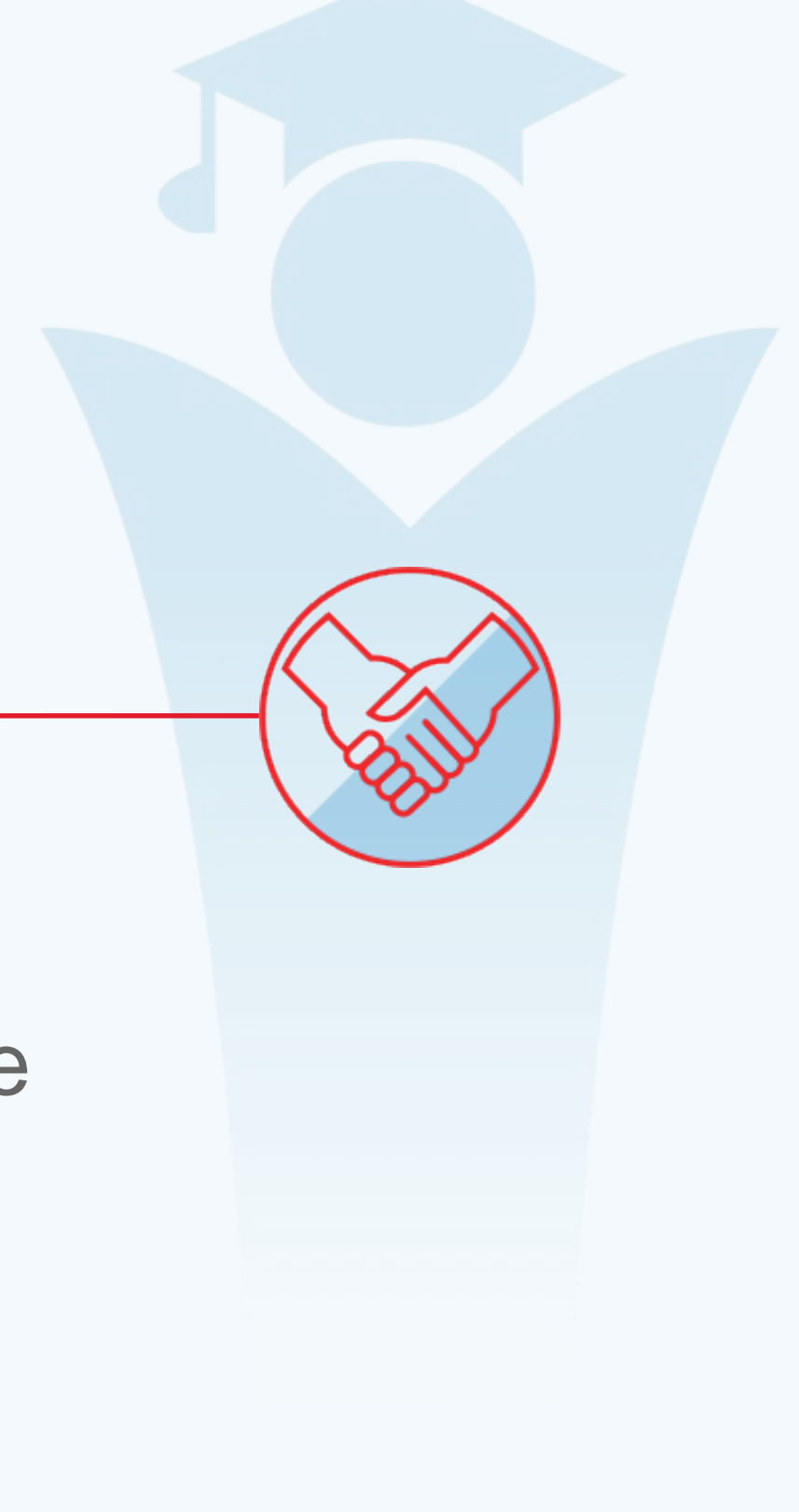
BACKGROUND

A PARTNERSHIP FOR EVERYONE'S SUCCESS

THE PROMISE STORY

As a result of the 20-year effort by the Long Beach Seamless Education Initiative, the Long Beach College Promise was established in 2008 as a partnership between the LBUSD, LBCC and CSULB.

The Promise is a long-term commitment by these institutions and the community to provide a clear opportunity to attain a college education for local students—stretching from elementary education through earning a degree.



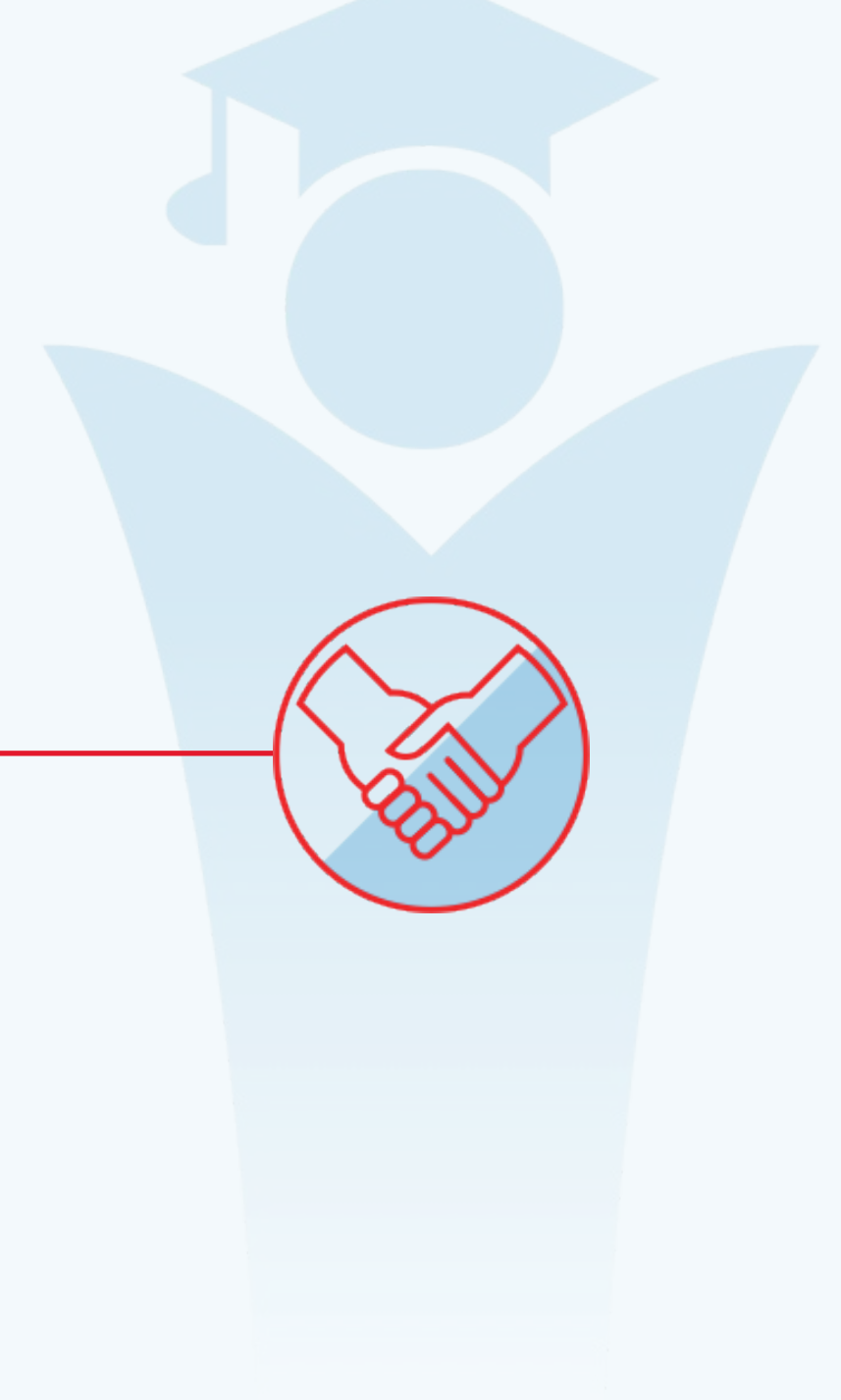
BACKGROUND



THE PROMISE STORY

Individual student success is paramount to the Promise commitment, over any single institutional need:

- Guaranteed admission to CSULB for local students despite hugely impacted application pool
- Major growth in the pool of college-ready students from both LBUSD and LBCC



THE PROMISE STORY

The Promise helps create a college-going culture with an expectation of success in achieving academic and career goals:

- Fourth-grade and middle-school aged LBCC and CSULB visits to familiarize students with campus
- K-12 implements A-G standards and Common Core curriculum to align with LBCC and CSULB



BACKGROUND

PROMISE GOALS

- Provide world-class education from preschool through college graduation
- Increase the percentage of LBUSD students prepared for and directly attending college from high school
- Increase the percentage of LBCC students earning degrees and/or certificates
- Increase the percentage of LBCC students successfully transferring to CSULB or another four-year college or university
- Increase the percentage of CSULB students graduating with a bachelor's or advanced degree





WHY THE PROMISE MATTERS

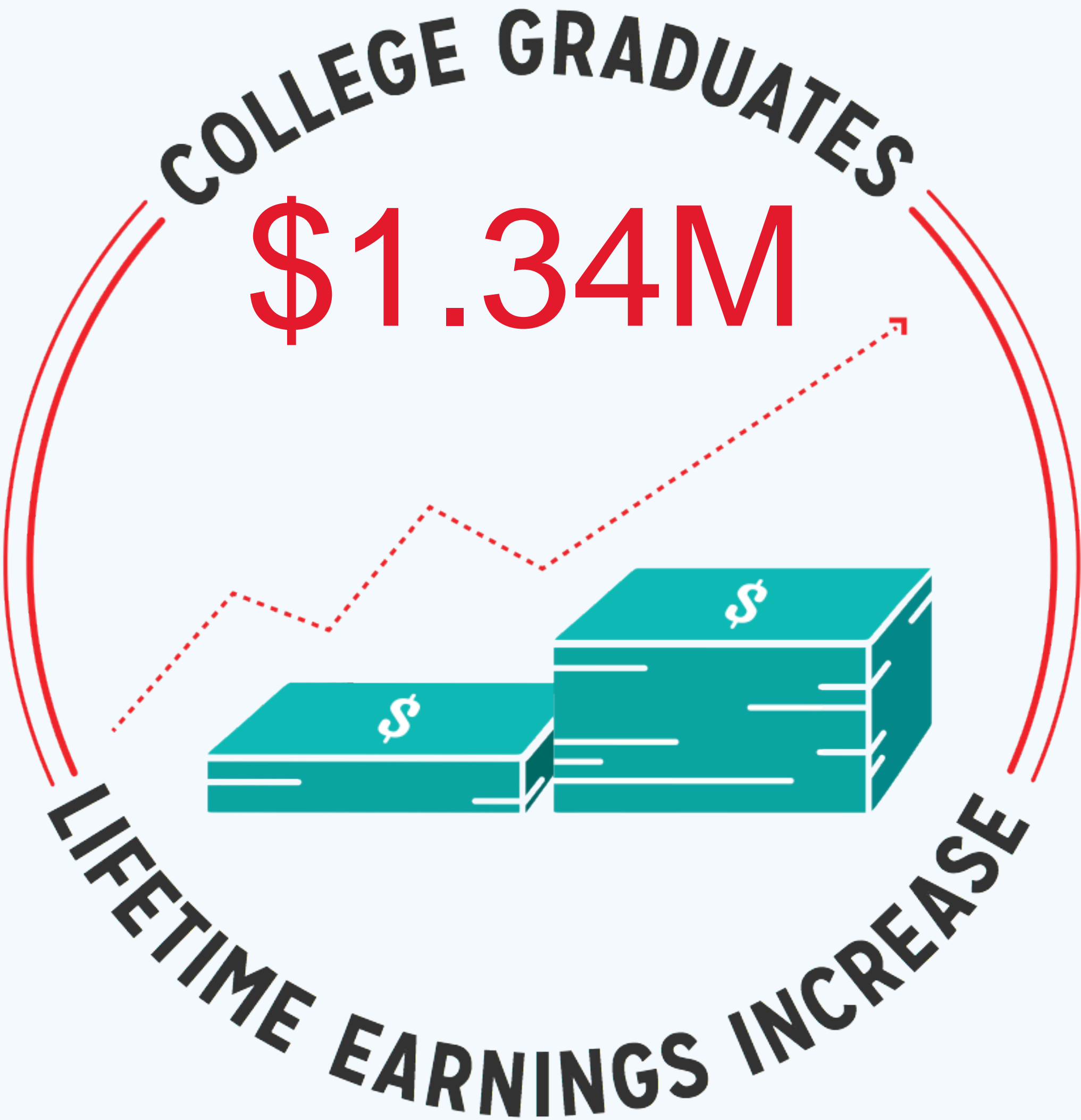
A SMART INVESTMENT

WHY THE PROMISE MATTERS

“ We know that one of the best ways to improve outcomes for our students and to close achievement gaps is to align rigorous academics to the world of work and careers.”

— California Senate President pro
Tempore
Darrell Steinberg (D-Sacramento)

WHY THE PROMISE MATTERS



WHY THE PROMISE MATTERS



WHY THE PROMISE MATTERS



WHY THE PROMISE MATTERS



WHY THE PROMISE MATTERS



“ The resources and friendships I developed at LBUSD, LBCC and CSULB enabled me to make a real plan for my future. I am on my way toward a double major in international business and hospitality management, heading to Germany this summer on an internship, and looking forward to one day becoming a philanthropist so that I can really help those who have less than I do.”

— LBCC transfer student on the Promise Pathway,
Dominique Vera



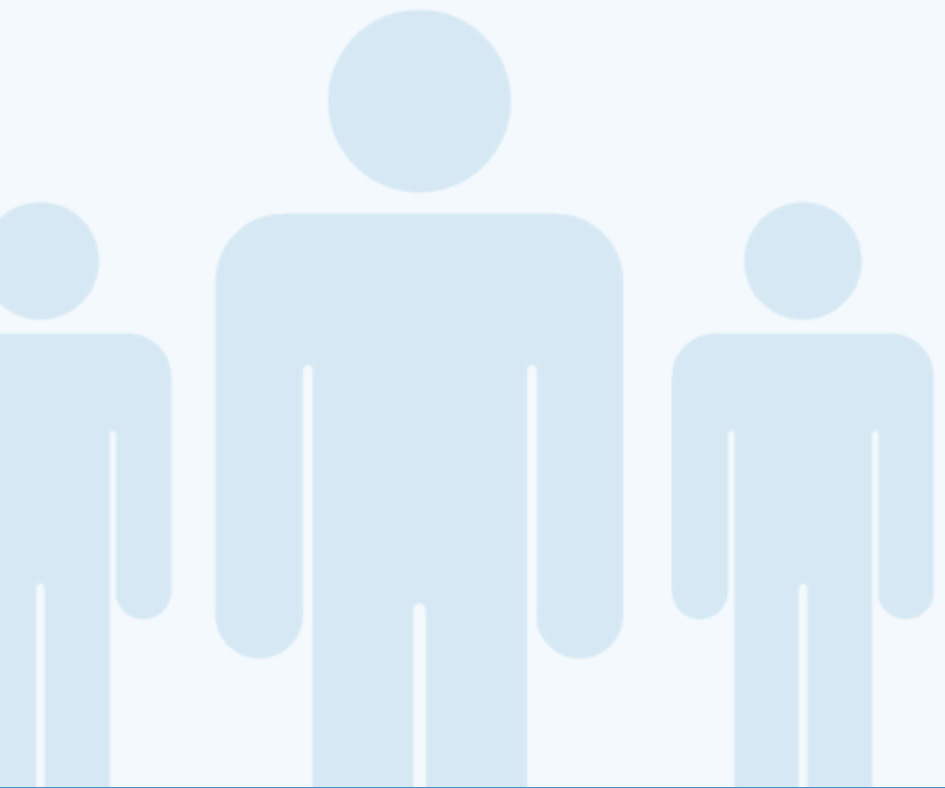
STRUCTURE & LEADERSHIP

ARCHITECTS OF A BETTER TOMORROW

STRUCTURE AND LEADERSHIP

EXECUTIVE COMMITTEE

Chris Steinhauser, Eloy Oritz Oakley, Jane Close Conoley
(LBUSD) (LBCC) (CSULB)



STRUCTURE AND LEADERSHIP

EXECUTIVE COMMITTEE

Chris Steinhauser, Eloy Oritz Oakley, Jane Close Conoley
(LBUSD) (LBCC) (CSULB)

LEADERSHIP COUNCIL

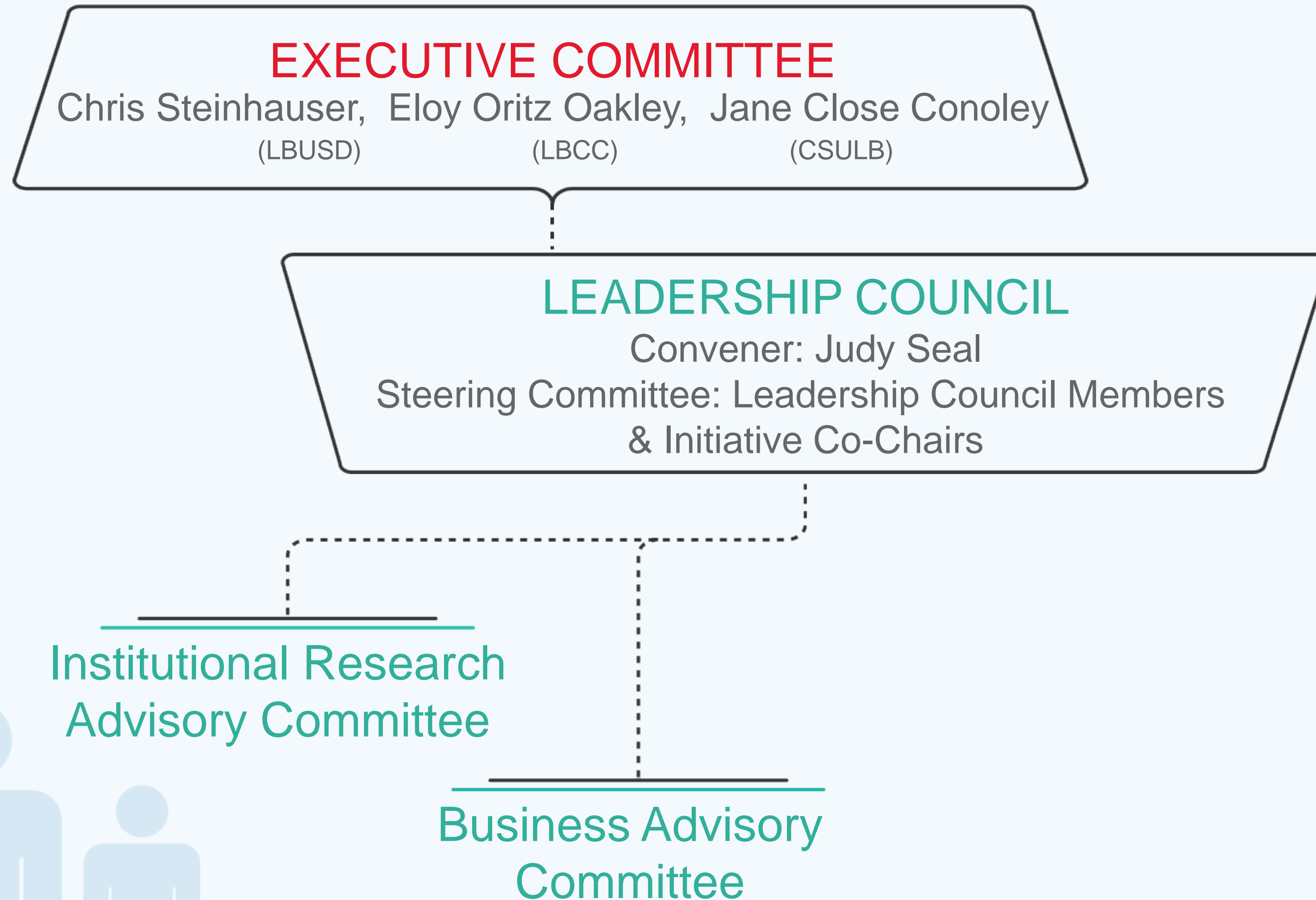
Convener: Judy Seal
Steering Committee: Leadership Council Members
& Initiative Co-Chairs

STRUCTURE AND LEADERSHIP

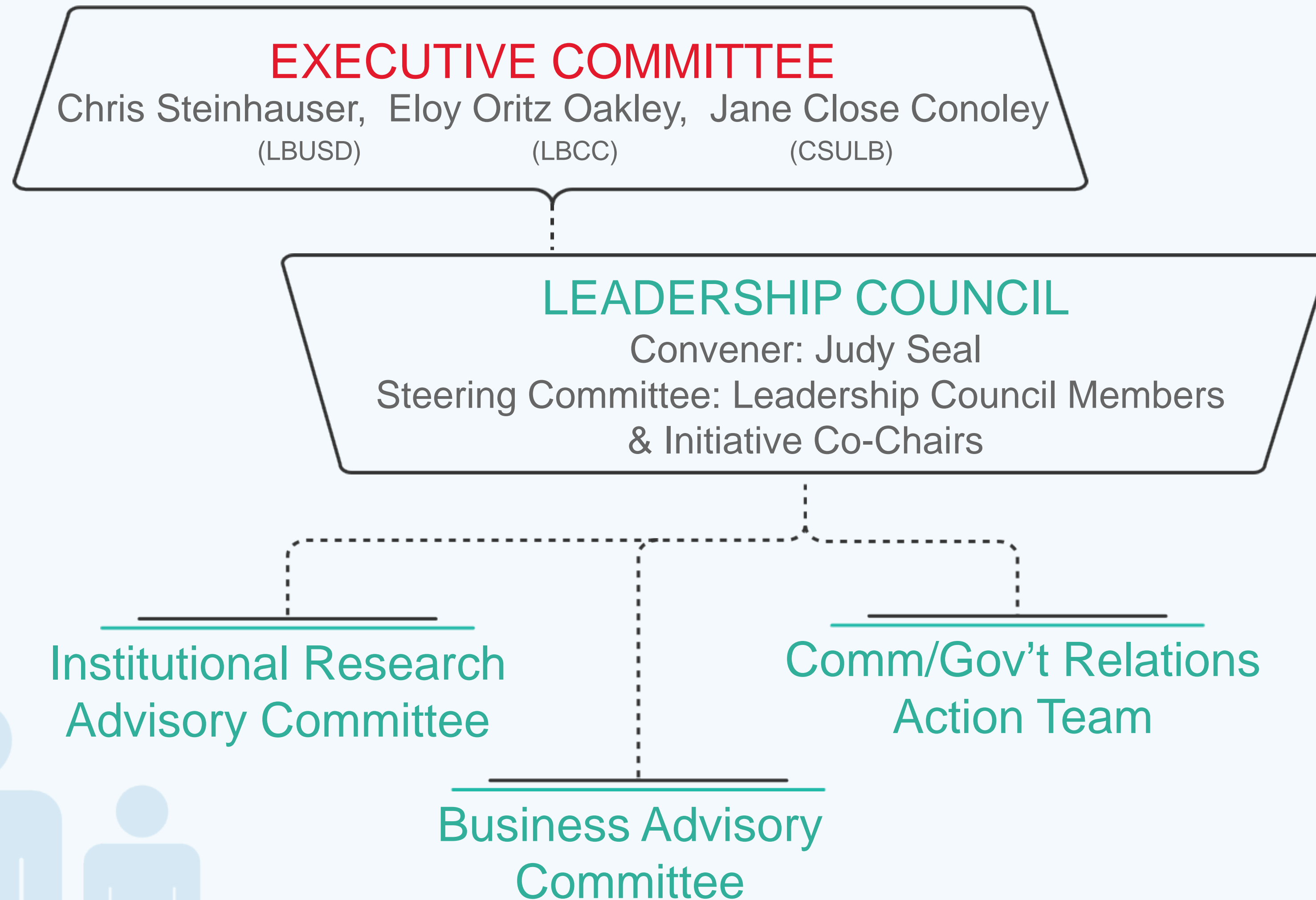


**Institutional Research
Advisory Committee**

STRUCTURE AND LEADERSHIP



STRUCTURE AND LEADERSHIP



STRUCTURE AND LEADERSHIP





INITIATIVES

FOUR KEYS TO UPWARD MOBILITY

INITIATIVES



INITIATIVES

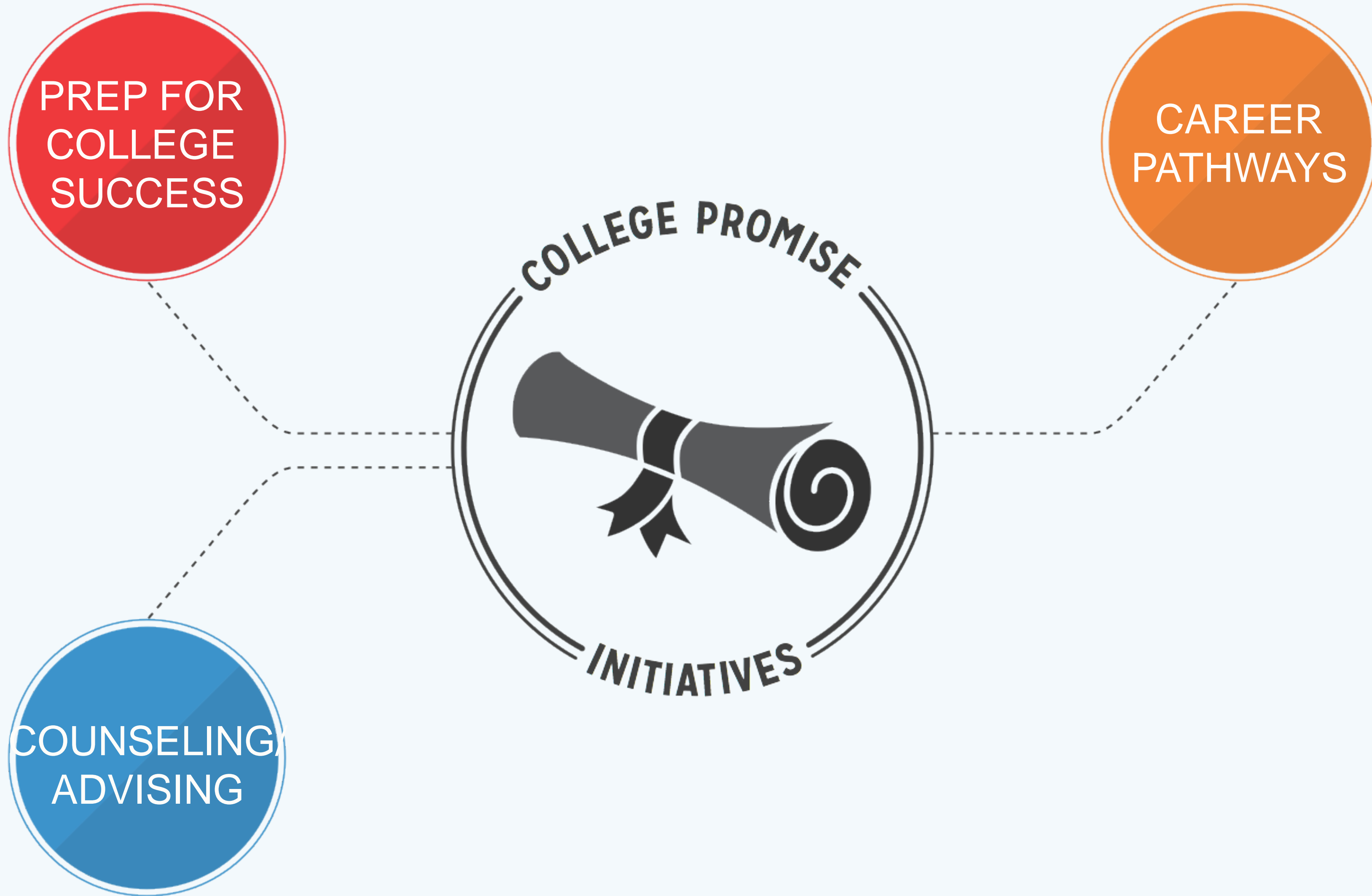
PREP FOR
COLLEGE
SUCCESS



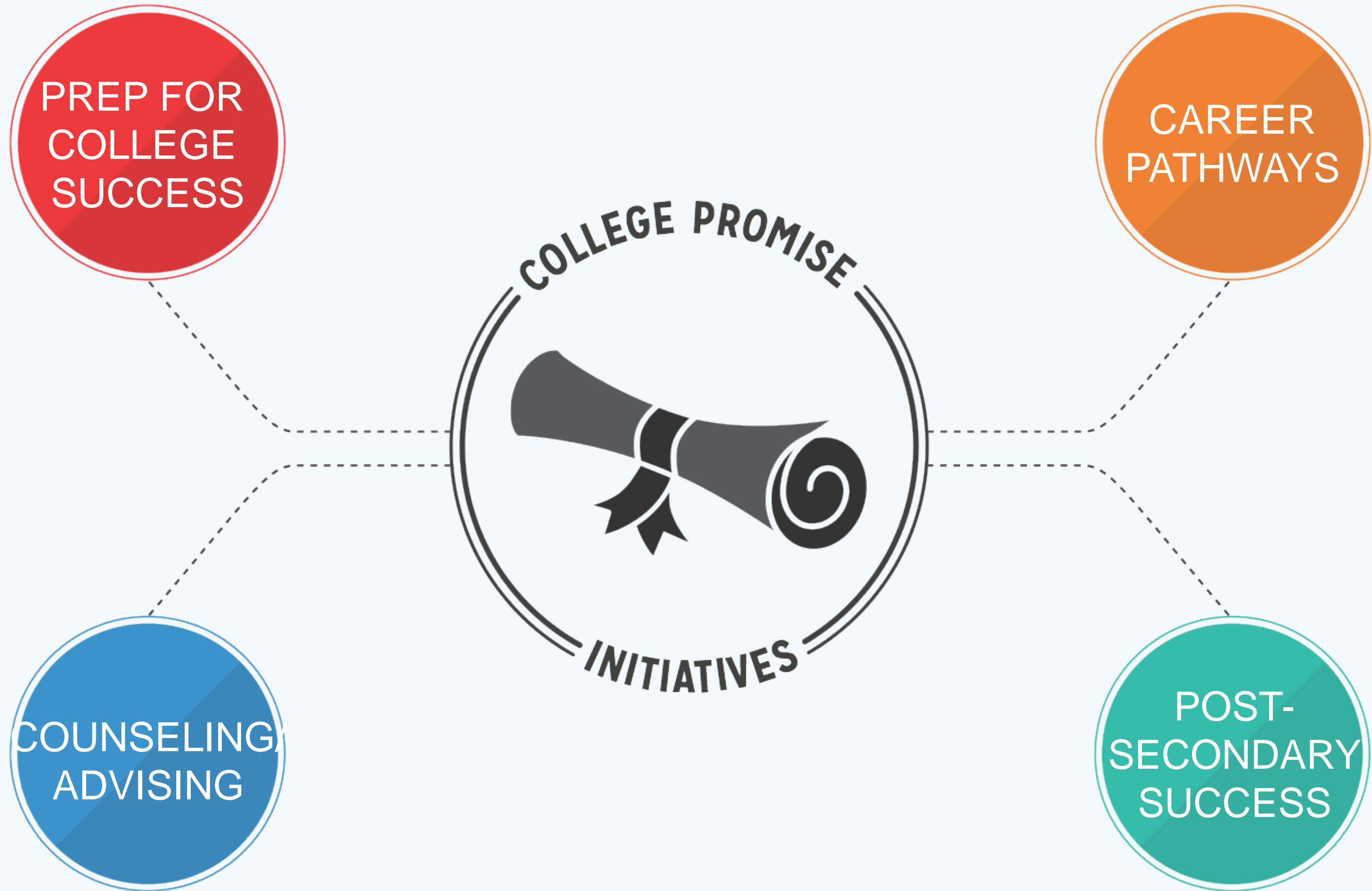
INITIATIVES



INITIATIVES



INITIATIVES



INITIATIVES

PREP FOR COLLEGE SUCCESS



Build a culture of college expectation that includes career awareness and preparation for collegiate academic rigor by:

- Aligning college readiness standards
- Aligning K-12 to higher education interventions
- Reducing need for college remediation through innovative assessment and approach to college preparation

INITIATIVES

CAREER PATHWAY



Creating pathways to college and career success for every student through a partnership of the Long Beach business community, LBUSD, LBCC and CSULB

COUNSELING ADVISING



Improving counseling and advising structure across LBUSD, LBCC and CSULB to ensure student success attending and transitioning from each institution

INITIATIVES

POST- SECONDARY SUCCESS



Promoting increased admissions, transfer, retention and graduation rates at LBCC and CSULB

TEACHER TRAINING

“ Under the Seamless Education Partnership, CSULB and LBUSD launched an effort to reform teacher training, with K-12 teachers meeting with CSU Long Beach faculty and students to explain ‘what it is really like in the classroom.’ The discussions led to the College of Education using experienced K-12 administrators and teachers to lead a number of its teacher training classes, as well as advise on the curriculum.”

— Little Hoover Commission Report,
2013 citing the Long Beach Promise



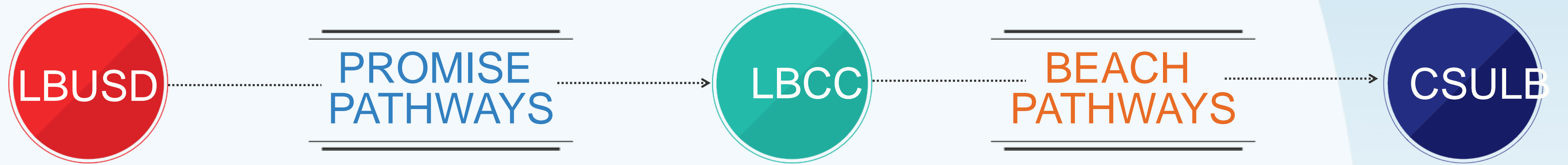
PATHWAYS

SETTING NEW COURSES IN EDUCATION

PATHWAYS



PATHWAYS





BEACH PATHWAYS

A dark blue circular logo with a white border and the text "CSULB" in white, representing California State University Long Beach. In the background, there is a faint, light blue graphic of a person wearing a graduation cap.

Long Beach Promise guarantees admission to CSULB for local students:

- For first-time freshman applicants from LBUSD and other local area schools who complete college preparatory courses with satisfactory grades and meet CSULB minimum admission requirements
- For local community college transfer applicants who complete all transfer preparation courses for a specific major with satisfactory grades and meet CSULB minimum admission requirements

PROMISE PATHWAYS

PROVIDING LBUSD GRADUATES A CLEAR PATH FOR SUCCESS AT LBCC

- Innovative placement pilot
 - > Placement based on grade and college success indicators beyond standardized testing
- Priority enrollment for incoming LBUSD graduates
- Prescriptive course schedule and support
 - > All first-year students having First Semester Education Plan, including enrollment in English, math and reading as required

PATHWAYS

EARLY EDUCATION MILESTONES IN FIRST YEAR

FALL 2011
LBUSD

FALL 2012
PROMISE PATHWAYS

SUCCESSFULLY
COMPLETED
TRANSFER MATH

5%

300%
INCREASE

15%

SUCCESSFULLY
COMPLETED
TRANSFER ENGLISH

12%

340%
INCREASE

41%

BEHAVIORAL
INTENT
TO TRANSFER

13%

275%
INCREASE

36%

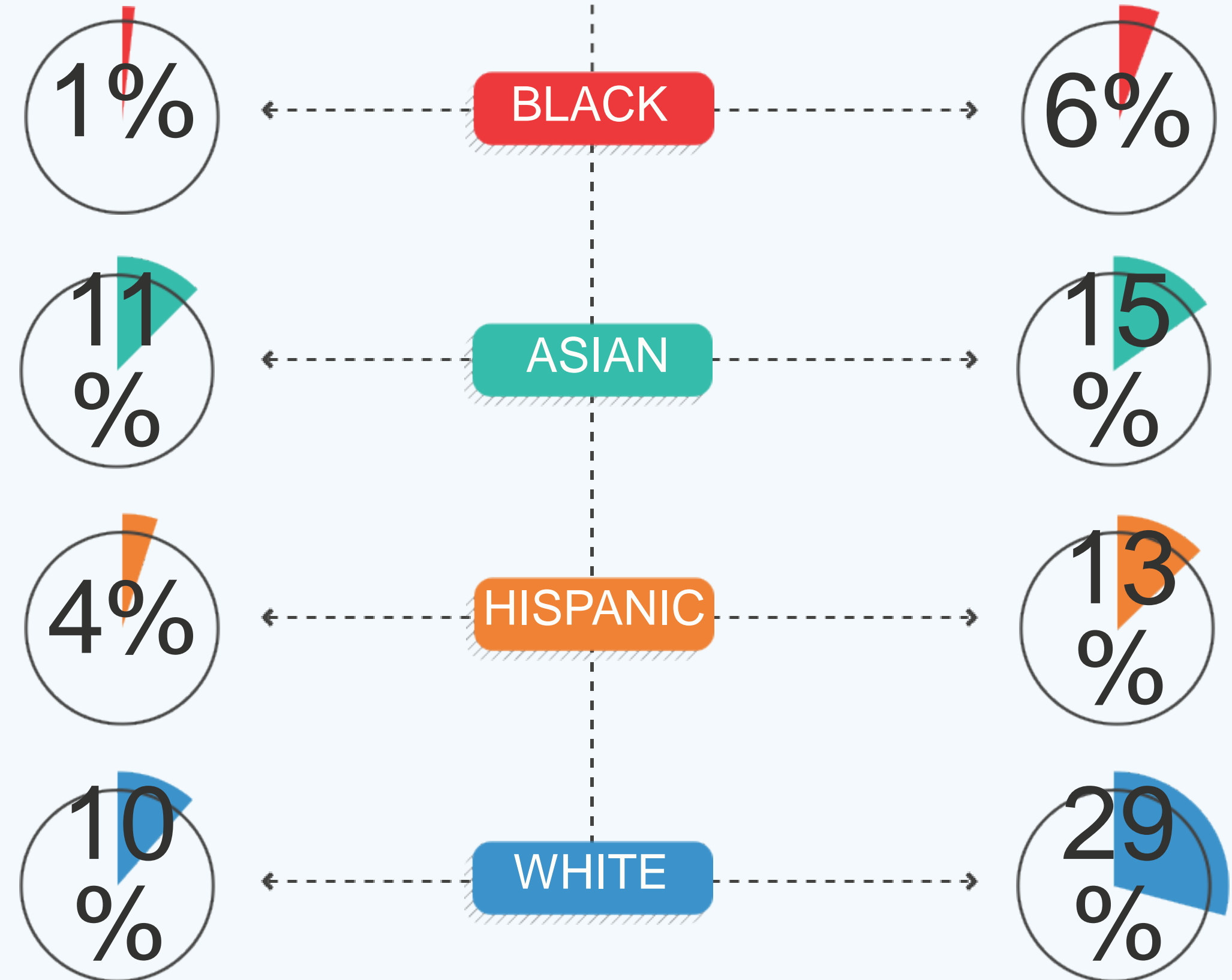
PATHWAYS

SUCCESSFULLY COMPLETED TRANSFER MATH

EQUITY IMPACT OF PROMISE PATHWAYS

FALL 2011

FALL 2012

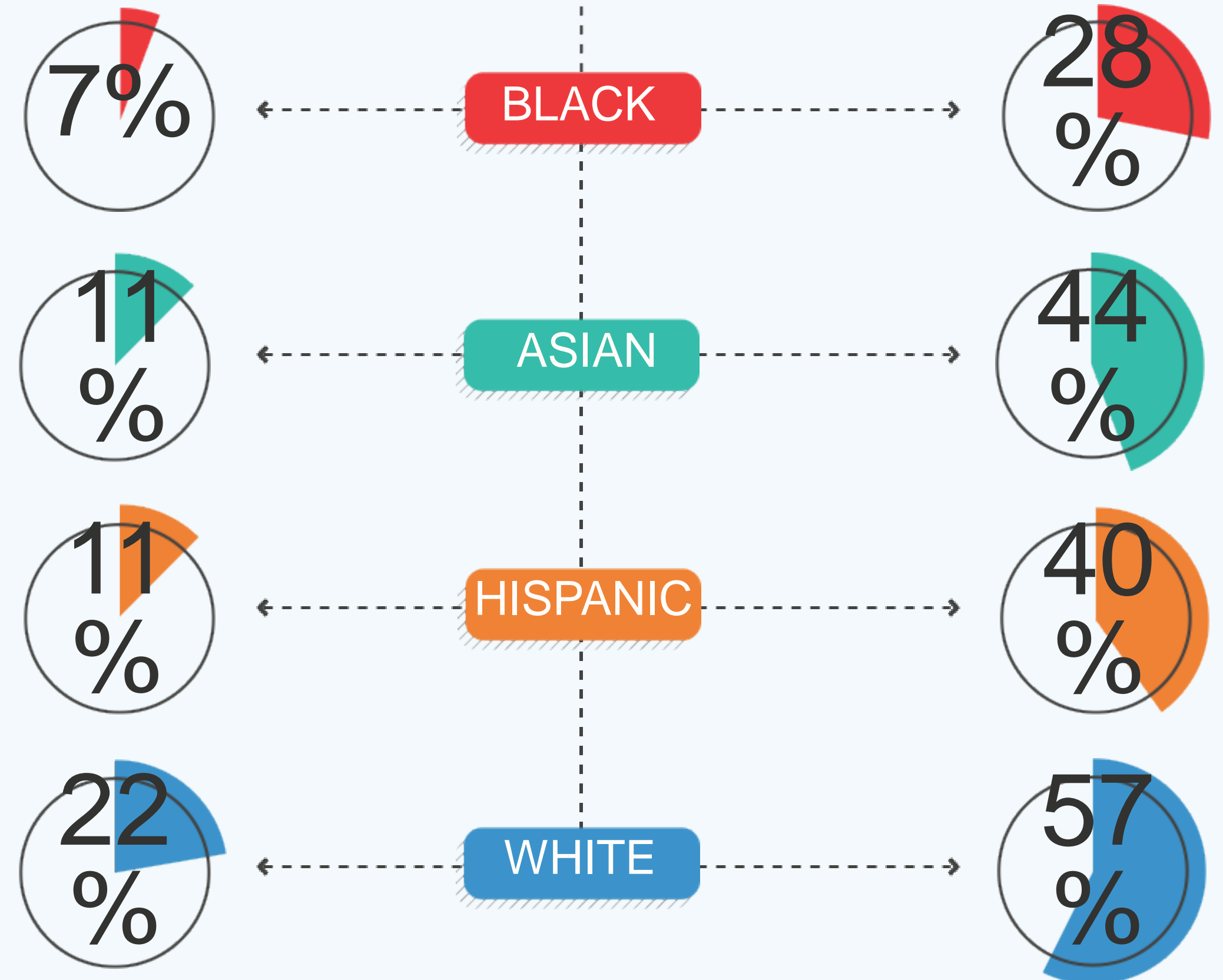


PATHWAYS

SUCCESSFULLY COMPLETED TRANSFER ENGLISH EQUITY IMPACT OF PROMISE PATHWAYS

FALL 2011

FALL 2012



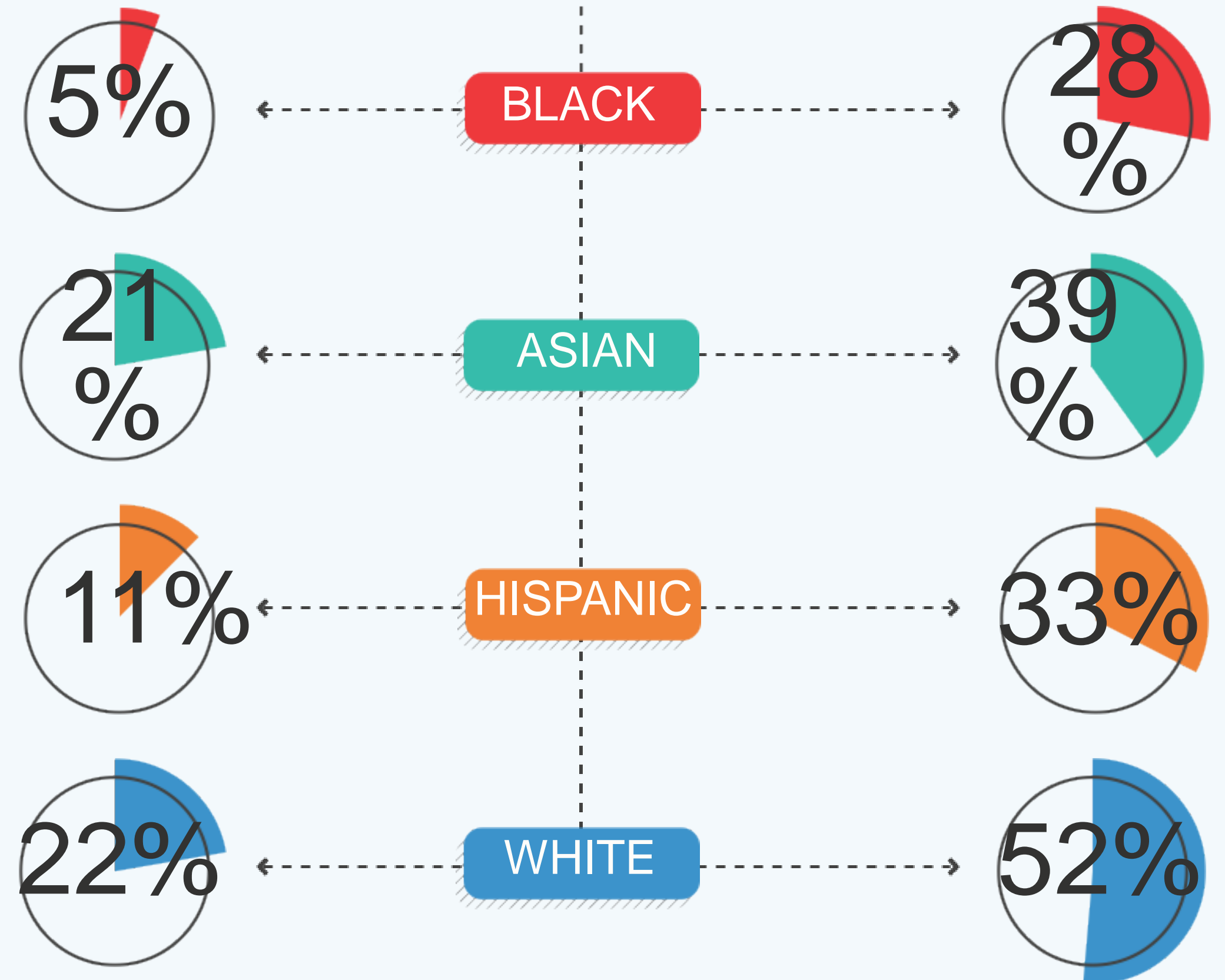
PATHWAYS

BEHAVIORAL INTENT TO TRANSFER

EQUITY IMPACT OF PROMISE PATHWAYS

FALL 2011

FALL 2012



BEACH PATHWAYS

PROVIDING LBUSD GRADUATES A CLEAR PATH FOR SUCCESS AT LBCC

Initiated in 2013, this option offers LBUSD graduates who meet CSU eligibility requirements but were not offered admission to CSULB a guaranteed way to transfer in.

- Guaranteed acceptance after only three semesters
- Includes a scholarship to cover first semester fees
- Guaranteed access to classes required to transfer to CSULB
- Specialized advising and programming at CSULB

CSULB APPLICATION POOL

- More than 83,000 applicants
- Ranked 5th in nation for number of applicants
- Fewer than 8,000 students will be enrolled in fall 2014

LOCAL GUARANTEE FOR ENROLLMENT PROTECTS LOCAL STUDENTS FROM SEVERE IMPACTION STATUS.



OUTCOMES

THE POWER OF A PROMISE

OUTCOMES

TUITION RELIEF

LONG BEACH PROMISE SCHOLARSHIP

Free enrollment from LBCC Foundation for all local high school graduates enrolling in fall semester

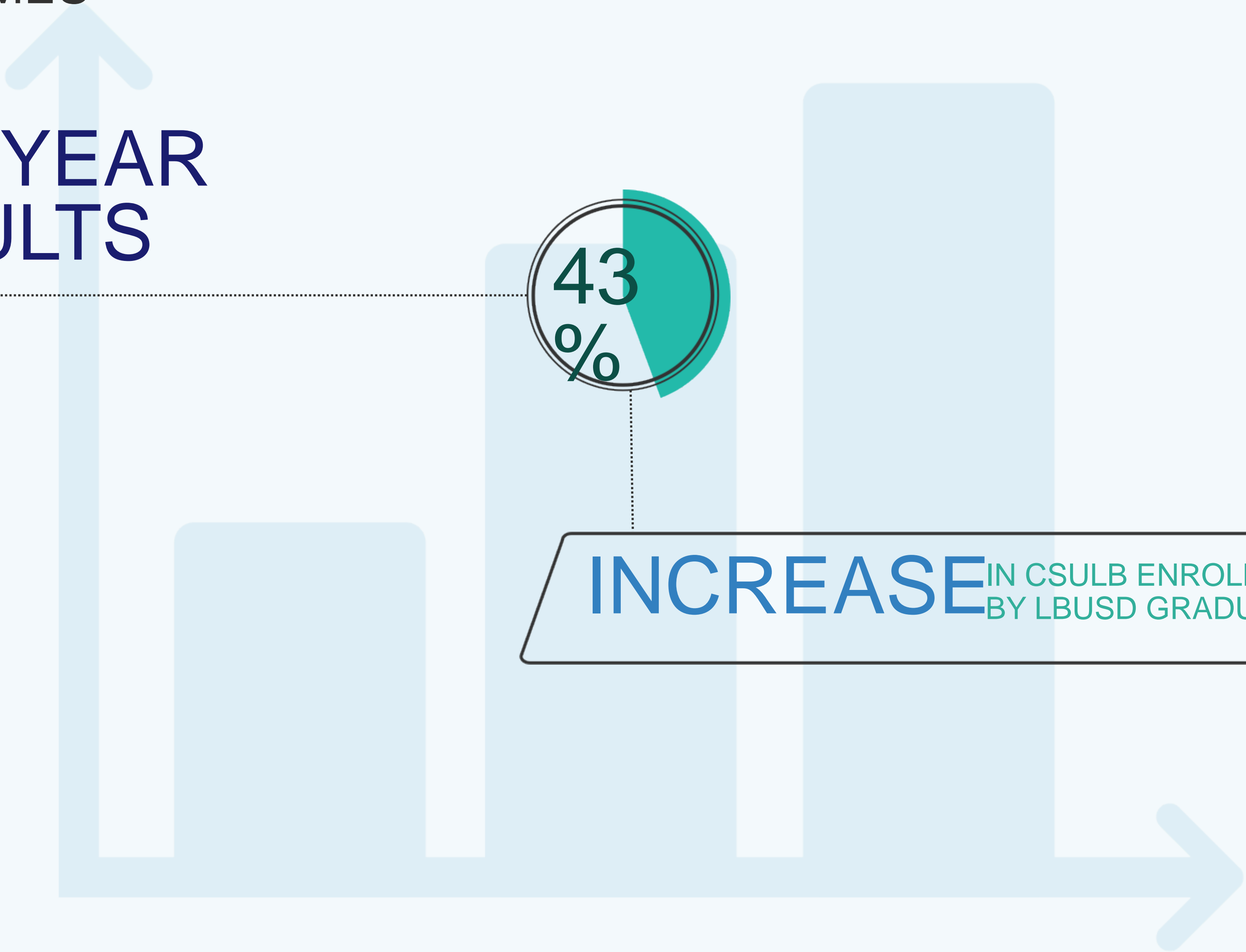


WITH OVER **5,600** STUDENTS BENEFITTING

SINCE 2008

OUTCOMES

FIVE-YEAR RESULTS



INCREASE IN CSULB ENROLLMENT BY LBUSD GRADUATES

OUTCOMES

FIVE-YEAR RESULTS



LBCC & LBUSD GRADUATES MORE LIKELY TO
REMAIN ENROLLED
AT CSULB THAN OTHER STUDENTS



RECOGNITION

EYEING THE LONG BEACH VIEW



**WHITE HOUSE INITIATIVE
FOR EXCELLENCE IN
EDUCATION OF HISPANICS**

Highlighted by President Obama for innovation in
education during National Education Summit



LITTLE HOOVER COMMISSION

Cites Long Beach College Promise
as successful model



LITTLE HOOVER COMMISSION

“ Regional partnerships such as the Long Beach College Promise not only get high school students to think of themselves as college-bound, but to prepare themselves so they are in a better position to succeed once they are there.



2010

STUDENT SUCCESS AWARD

Long Beach Promise recognized by
California Community Colleges Chancellor's
Office for statewide award



BUSINESS HIGHER ED FORUM

Recognized as the new education standard in the
Forum's case study: Improving Through
Collaboration



BUILDING A PROMISE PROGRAM

FIVE WAYS TO OPEN UP LIMITLESS OPPORTUNITY

1

CONVENE LEADERSHIP

- Academic leadership at district, community college and state college levels
- Municipal, state and federal elected leadership
- Community business and social justice/non-profit leaders

2

CREATE AN AGREEMENT OR COMPACT

- Establish trust between leaders and forge commitment to program over long term
- Establish accountability on the side of students and their families by having them sign the agreement

3

CREATE AN ACTION PLAN

- Find and implement initiatives and pathways tailored to community needs

4

SELECT A FULL-TIME ADMINISTRATOR/CONVENER

- Ownership of program vested in staff to hold leadership accountable

5

CREATE A FULLY TRANSPARENT REPORTING STRUCTURE & SCHEDULE

- Public disclosure of both successes and challenges to elicit support or quickly address concerns

BUILDING A PROMISE





QUESTIONS & ANSWERS