



California Community Colleges

**CCDP  
Demonstration  
Project**

**VISION 2030**  
A Roadmap for California  
Community Colleges

**4CIS**  
California Community Colleges  
Consortium for Information Systems

# **Building Momentum:** Forging a Path Forward for the Common Cloud Data Platform

June 17, 2025

# Agenda

1. Project Team and Partners
2. Common Cloud Data Platform Vision
3. Benefits to Students, Colleges, and Staff
4. Key Achievements
5. Scaling and Expanding Impact

# Project Team



**Rupa Saran**

Project Lead

*Vice Chancellor  
and  
Chief Information  
Technology Officer*

Coast CCD



**Craig Hayward**

Project Sponsor

*Visiting Executive  
for Strategic  
Research and  
Innovative Design*

CCCCO



**Gary Moser**

Project Coordinator

*Vice Chancellor  
and  
Chief Information  
Officer*

Kern CCD



**Jory Hadsell**

Project Coordinator

*Vice Chancellor  
and  
Chief Technology  
Officer*

FHDA CCD



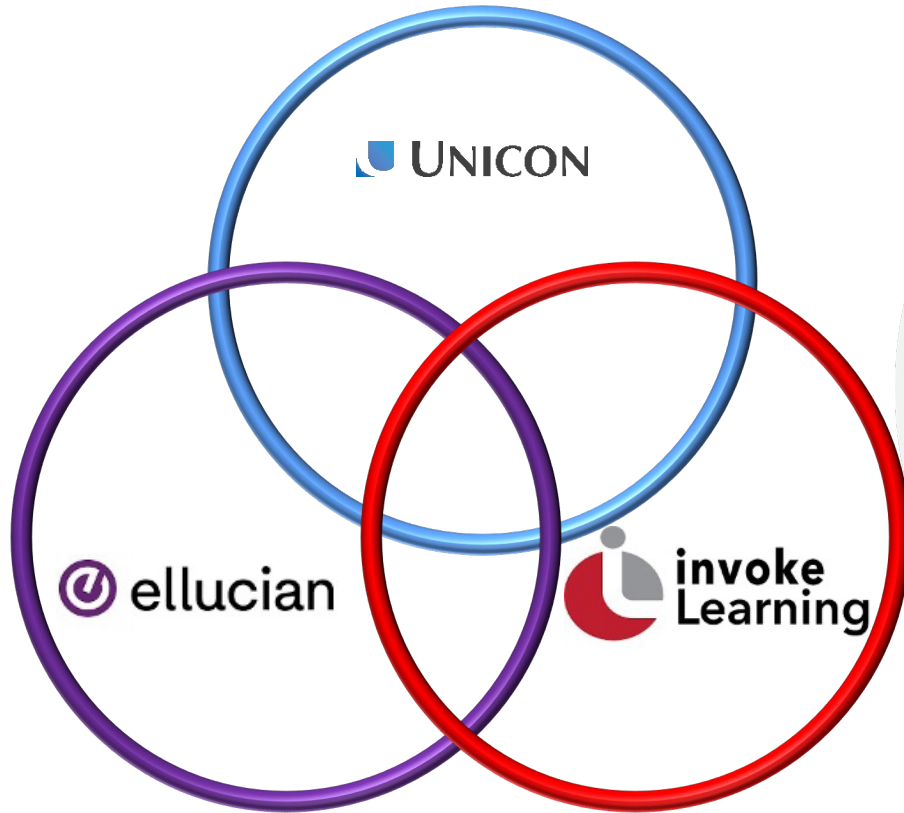
**Justin Schultz**

Project Support

*Director, Strategic  
Planning &  
Operations, IT*

FHDA CCD

# Solution Partners

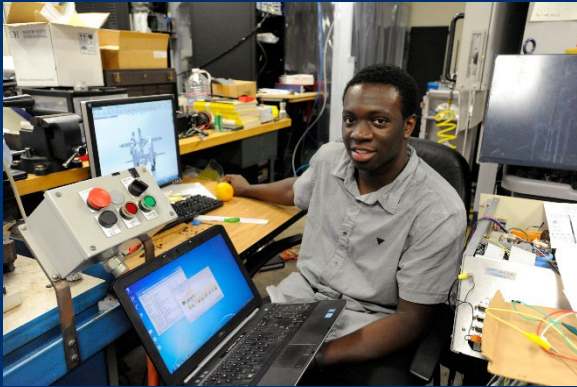


# Initial Participating Districts

- **Coast Community College District:** Coastline, Golden West, Orange Coast
- **Kern Community College District:** Bakersfield, Porterville, Cerro Coso
- **Foothill - De Anza Community College District:** Foothill, De Anza
- **Siskiyou Joint Community College District:** College of the Siskiyous
- **Santa Clarita Community College District:** College of the Canyons
- **Cerritos Community College District:** Cerritos

The initial cohort was selected based on a variety of factors, including but not limited to district size, multi- or single-college, executive interest, and to represent a variety of ERP systems.

# What is the Common Cloud Data Platform?



- Single interface for Chancellor's Office to access districts' data
- Establishes a core data architecture and schema that allows for fraud mitigation and AI technologies
- Able to streamline MIS and 320 reporting
- Designed to address a diversity of ERP providers and multiple hosting scenarios (on-premises, cloud, SaaS)

# Benefits to Students

- Improved, more timely tracking of course-taking, units, and progress across the system.
- Improved support and early alert options, including from AI-enabled technologies.
- Systemwide capabilities to ensure the integrity of enrollment systems and combat fraud.
- Real-time student analytics, that will enhance program mapping and student pathways, thus facilitating smoother program completion with fewer excess units.
- Streamlined transfer capabilities, including ability to support automatic application and acceptance pipeline to other institutions
- Support for the Cradle-to-Career program and other intersegmental initiatives.

# Benefits to Colleges and Staff

- Streamlined data and attendance reporting, enabling overstretched IT staff to prioritize critical duties.
- Synchronization of data from districts to the Chancellor's office will occur in a modern system, improving data governance and system responsiveness while reducing downtime.
- Implementation of a field-driven common data structure; and
- Creation of a Chancellor's Office dashboard will provide real-time data updates, enabling the state to rapidly identify enrollment and success trends.



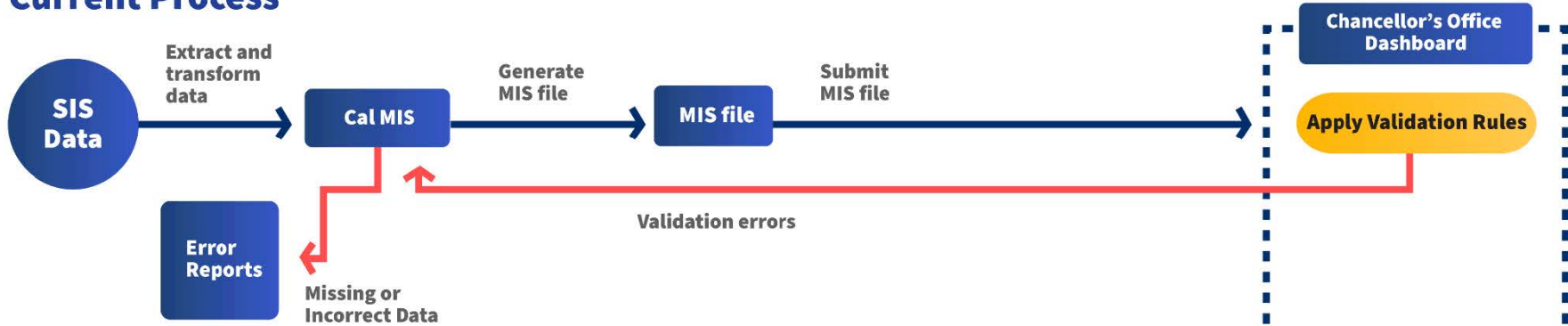
# What CCDP Means for You

- ✓ Colleges save time—staff focus on strategy, not spreadsheets.
- ✓ Leadership gains insights—better funding/resource allocation.
- ✓ Students benefit—faster reporting means proactive interventions and smoother transfers.

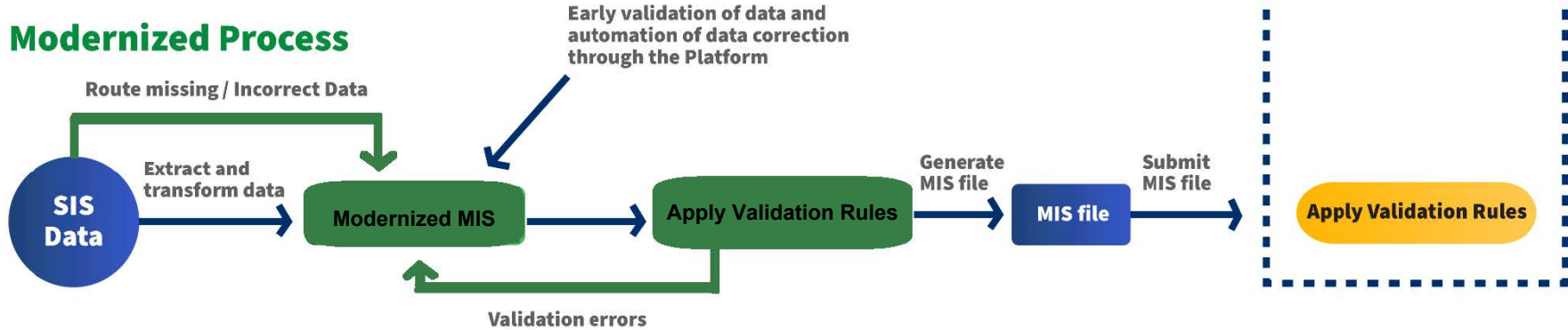
*"We're replacing what I call 'Rube Goldberg device processes'—exporting a file, doing this, then uploading it. If any step breaks, it creates a lot of issues. CCDP replaces that with software that communicates between systems, making everything smoother, with fewer problems."*

— Matt Donaldson, Director of Information Technology - College of the Siskiyous

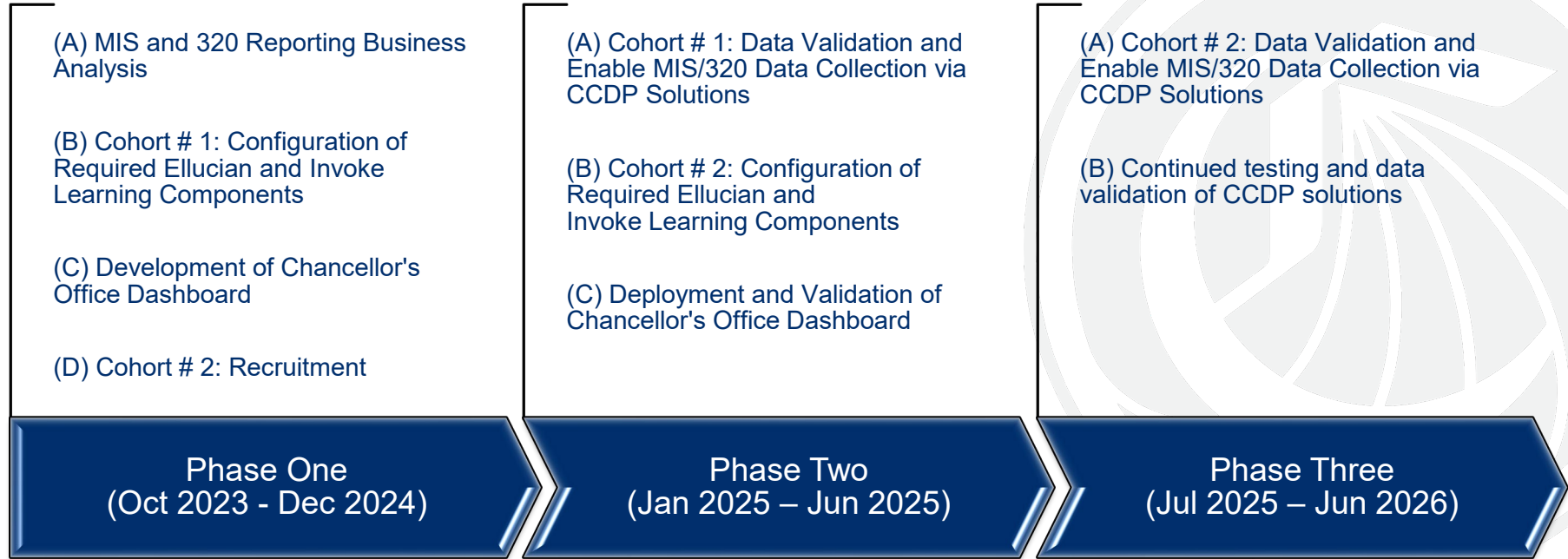
## Current Process



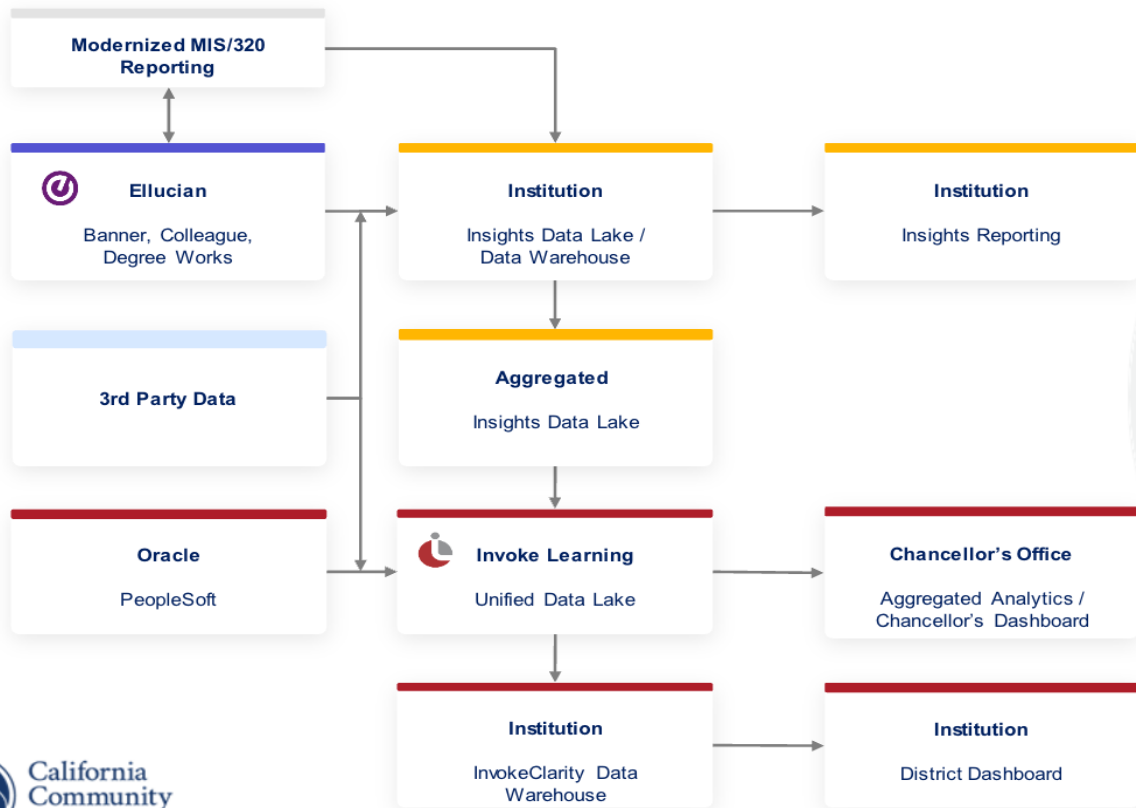
## Modernized Process



# Current Grant: Project Timeline Summary



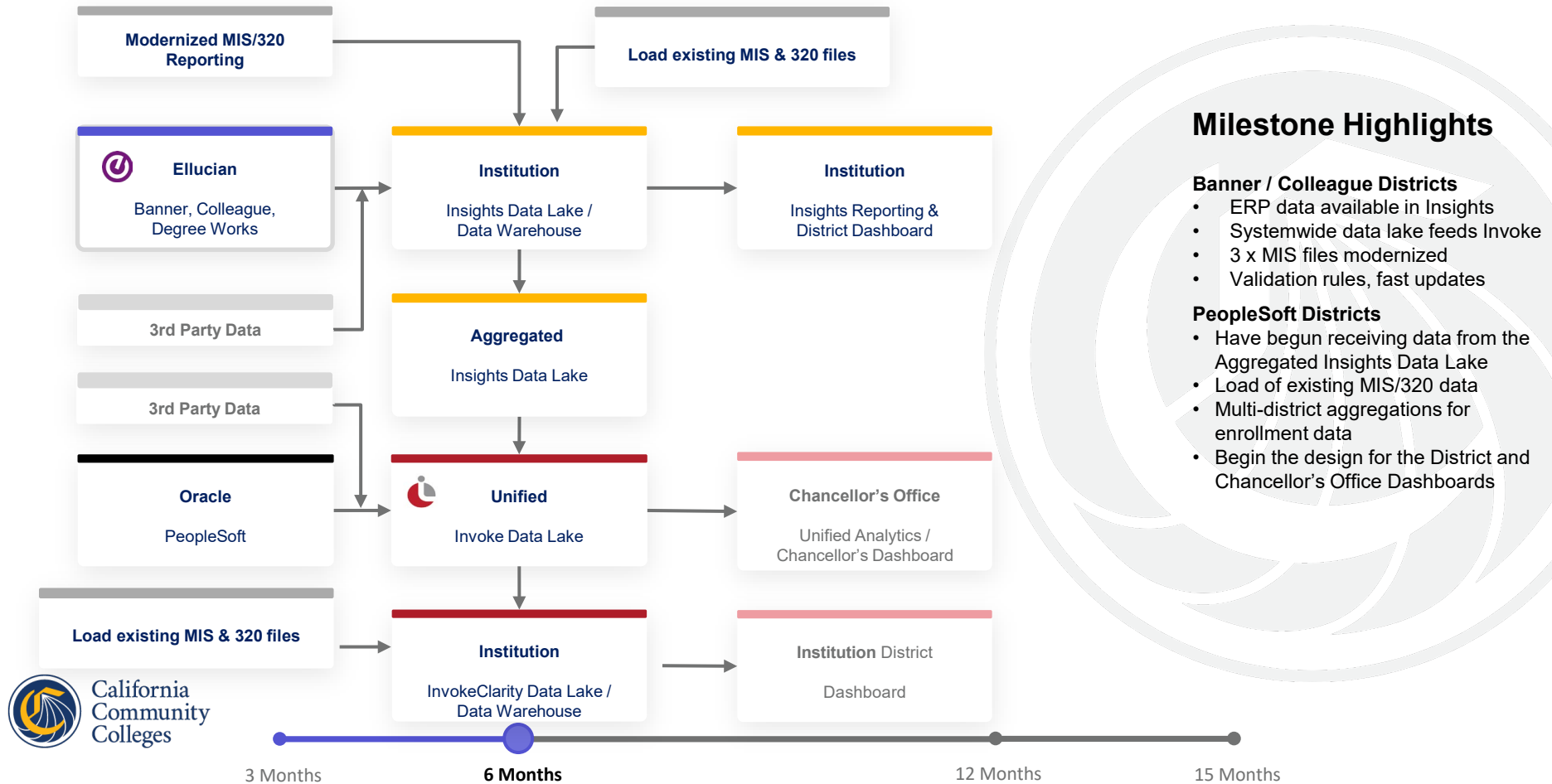
# Original CCDP Project Vision



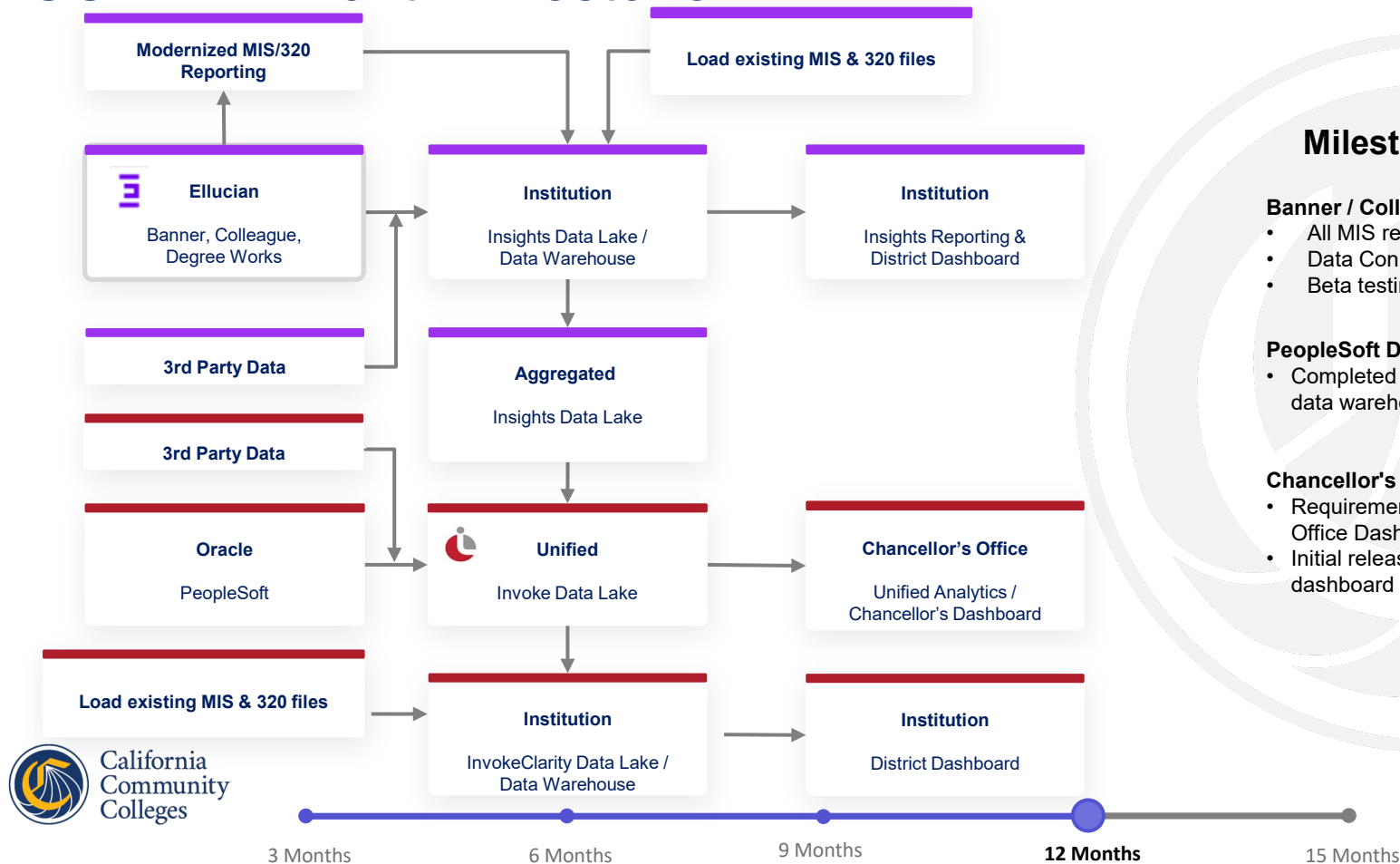
## Vision Highlights

- Ellucian districts can report on MIS, 320, 3rd party and ERP data (including transactional data) from within Insights
- MIS and 320 data available in Aggregated Data Lake
- ERP and 3rd party data available in Aggregated and Unified Data Lakes
- PeopleSoft districts can report on MIS, 320, 3rd party and ERP data (including transactional data) from within InvokeClarity
- Districts can derive functional and fiscal benefits

# 6-Month Milestones Delivered



# CCDP 12 Month Milestone



## Milestone Highlights

### Banner / Colleague Districts

- All MIS reports modernized
- Data Connect import for 3rd party data
- Beta testing of modernized solution

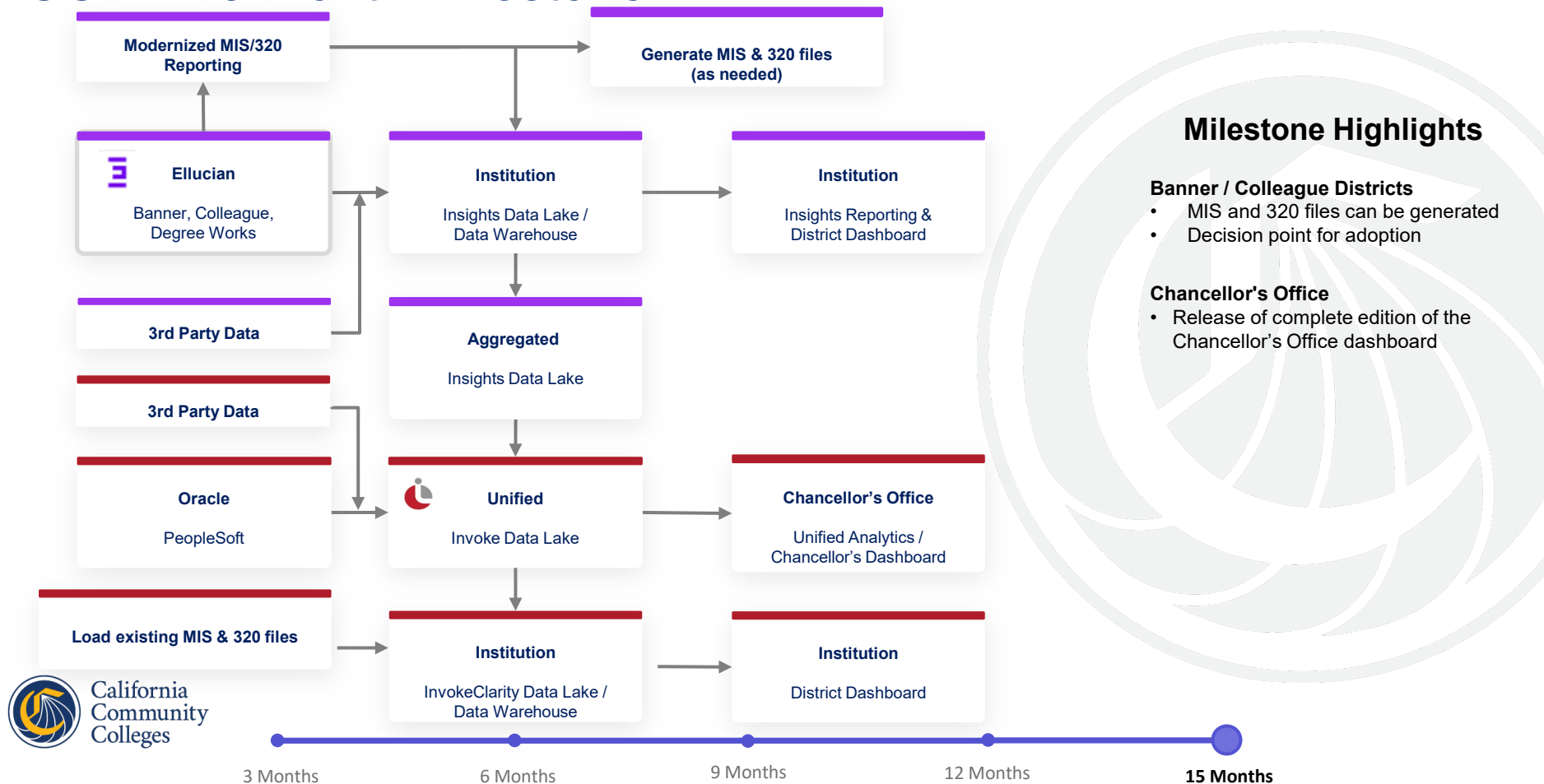
### PeopleSoft Districts

- Completed validation of InvokeClarity data warehouse layer.

### Chancellor's Office

- Requirements complete on Chancellor's Office Dashboard
- Initial release of the Chancellor's Office dashboard

# CCDP 15 Month Milestone



# Chancellor's Office Dashboard

**Month 12 Goal:** Provide daily enrollment view along with enrollment trends and benchmarks for all CCDP Cohort 1 colleges, aggregated to districts and various region types

## Process:

- Gathered requirements from Project Leadership and CO Teams through series of requirements meetings
- Built dashboard according to wireframe designs and desired functionality
- Created a database that combines aggregated data from each district using Invoke's curated tables

## Status:

- Dashboard built for daily data with three highly detailed & disaggregateable views
  - Enrollment Management
  - Trends
  - Benchmarks



# Chancellor's Dashboard – Enrollment Management View



California Community Colleges

ENROLLMENT SUMMARY

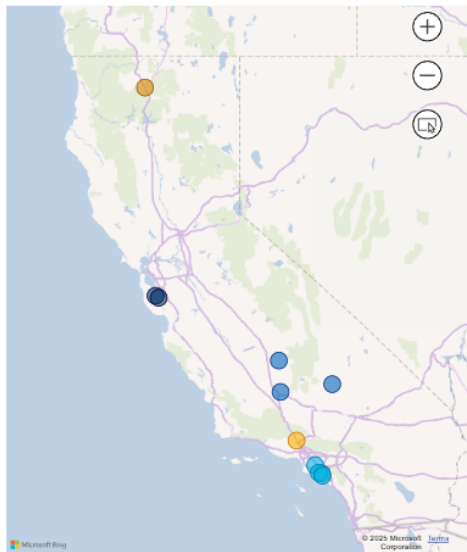
TRENDS

BENCHMARKS

MIS TOPICS

Last updated 6/15/2025

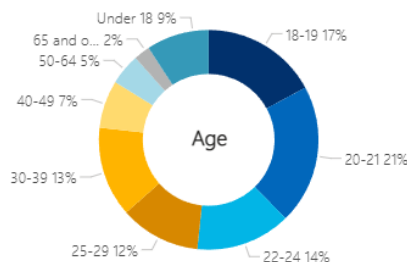
REGION TYPE: Macro-Region REGION NAME: All DISTRICT: All COLLEGE: All Reset Spring 2025 Daily MIS



137,418 Students Enrolled (Headcount) 0% to same term year prior

## Student Characteristics

Age Gender Ethnicity Type Modality FT/PT Status



18-19 23,518 ↑ 6%

30-39 18,238 ↓ 7%

## Total Enrollment

2025 Spring Term compared to 2024 Spring Term

Region Name	Enrollment	% of Total	YoY% Chg
Los Angeles/Orange County	54,319	40%	↑ 5%
Central/Motherlode	37,805	28%	↑ 2%
Bay Area	26,316	19%	↑ 3%
South Central Coast	16,795	12%	↓ 19%
North/Far North	2,197	2%	↓ 5%

## Enrollment By Macro Region

Bay Area	↑ 3%	North/Far North	↓ 5%
Central/Motherlode	↑ 2%	San Diego/Imperial Counties	0%
Inland Empire/Desert	0%	South Central Coast	↓ 19%
LA/Orange County	↑ 5%	Unassigned	0%

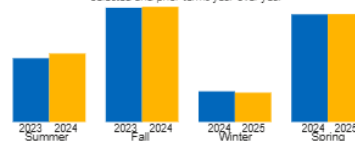
## Top Tracks and Programs

Non-CTE CTE

Liberal Arts and Sciences, General Studies and Humanities	15,579	↑ 5%
Psychology	5,318	↓ 4%
Multi/Interdisciplinary Studies	5,260	0%
Biological and Biomedical Sciences	4,723	↑ 6%
Social Sciences	4,528	↓ 1%

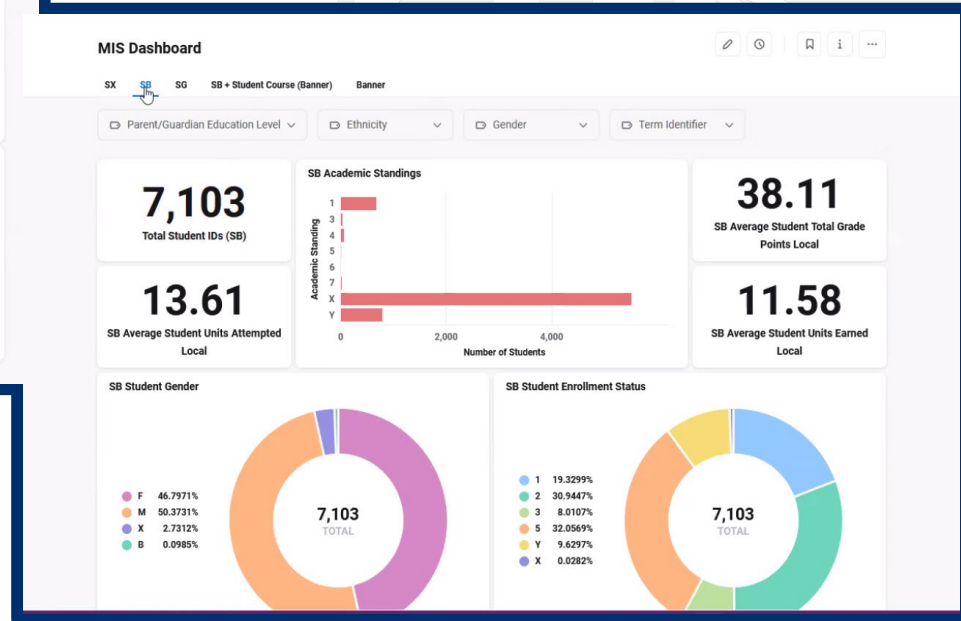
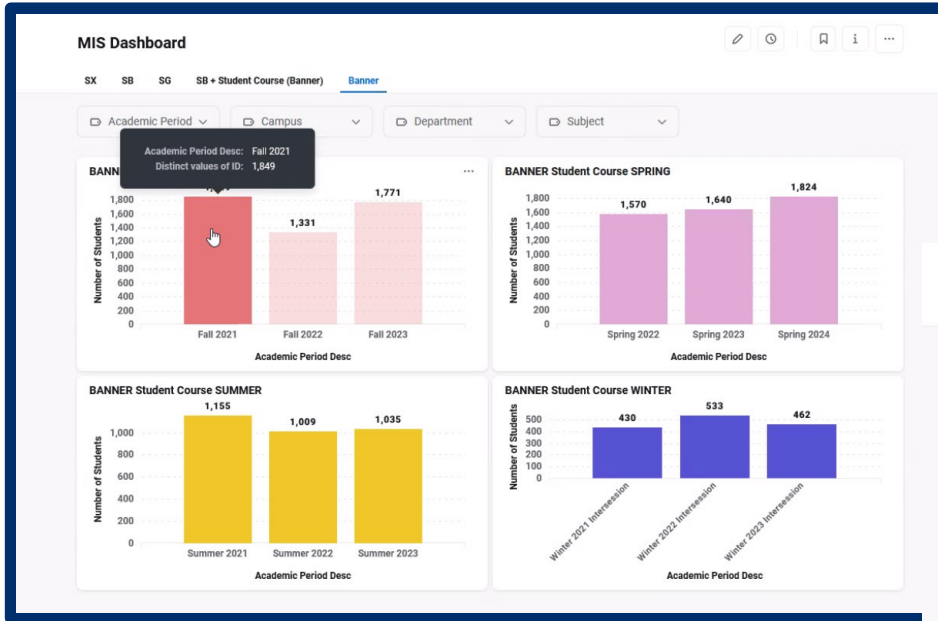
## Term Trends

Selected and prior terms year over year

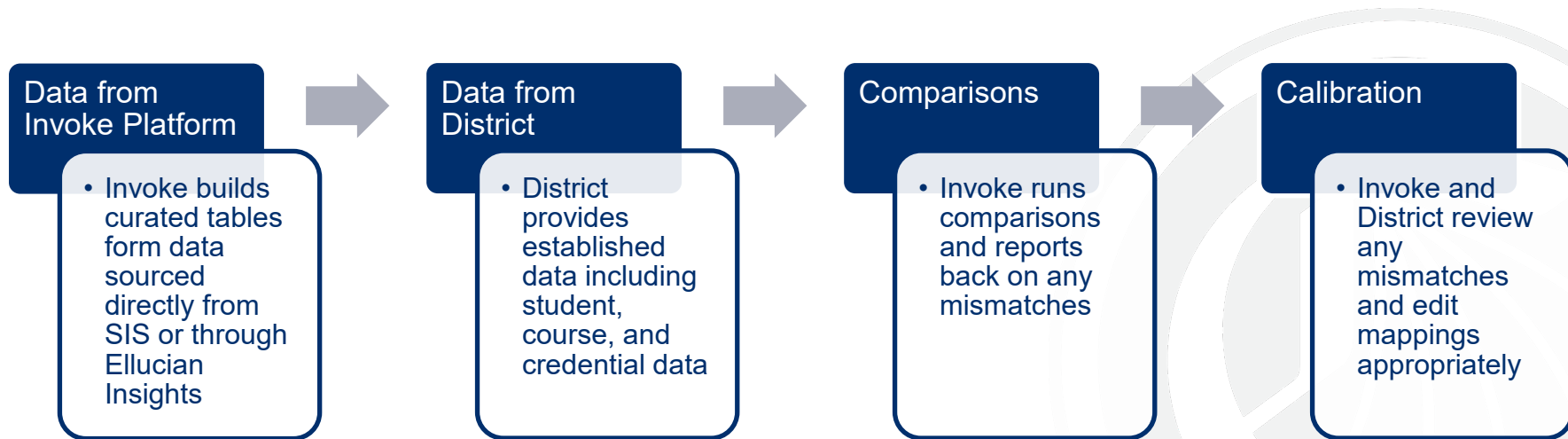


California Community Colleges

# MIS Dashboard Examples



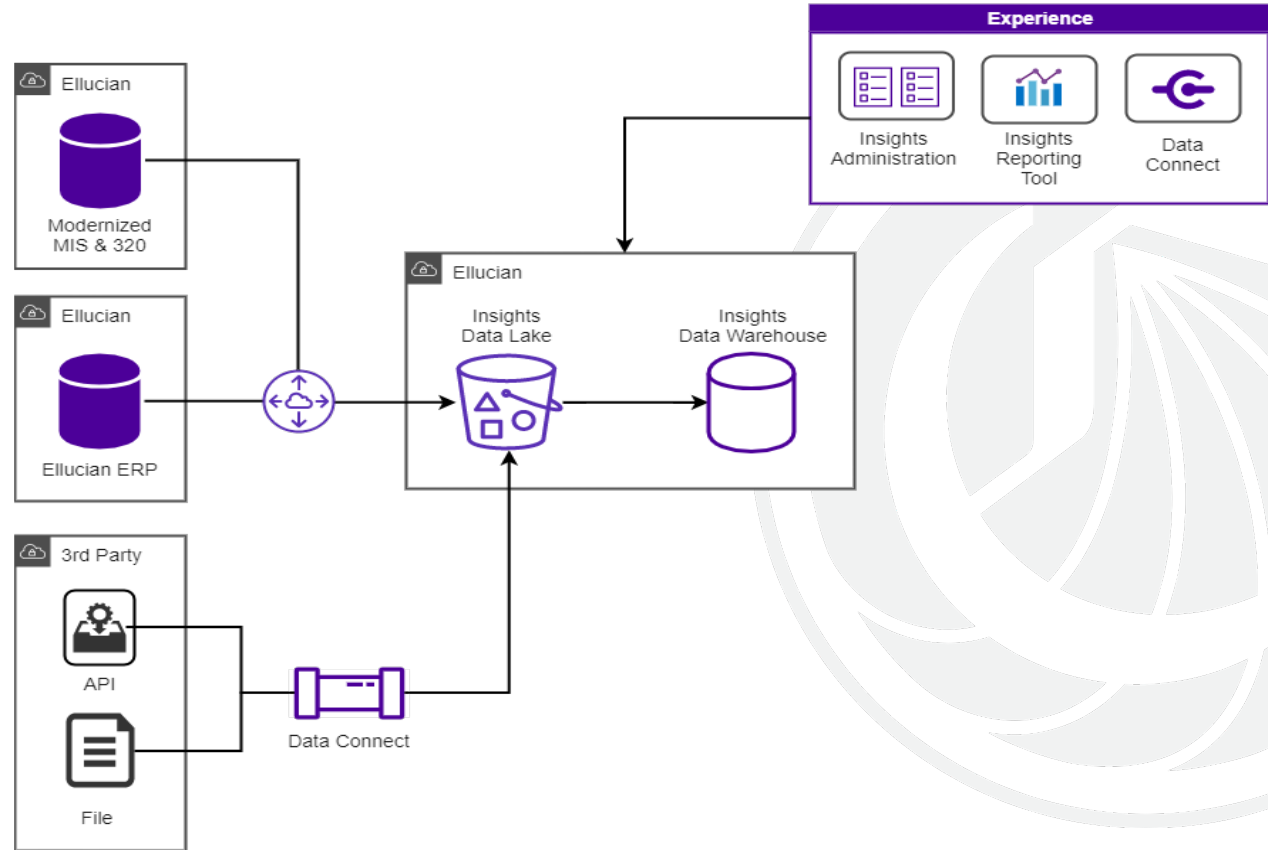
# Invoke Data Validation Process



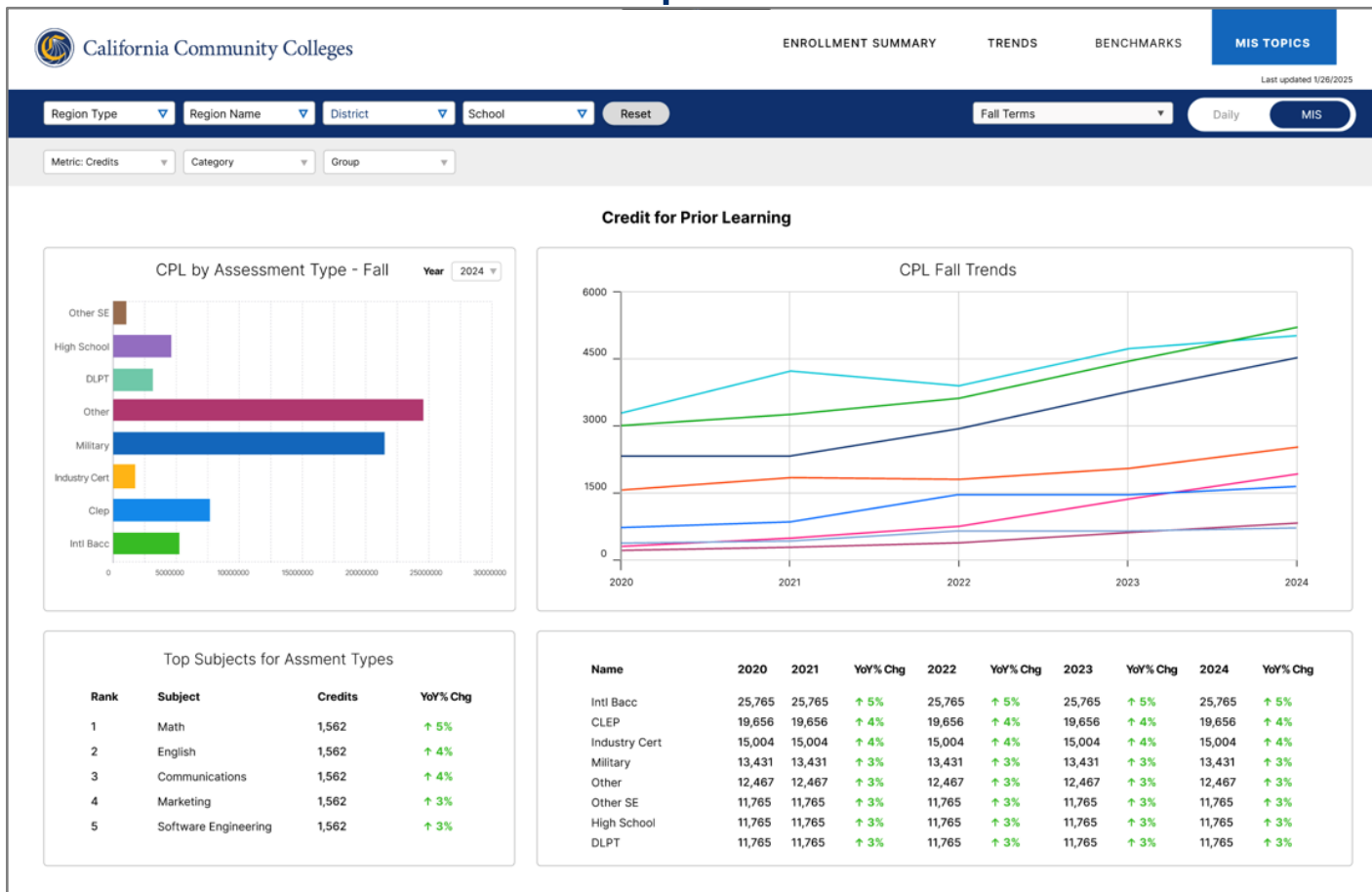
- This is an established and efficient validation process
- Invoke Learning manages this process to minimize effort required from the district
- Ensures accuracy of the data flowing to Chancellor's Office dashboard

# Third-Party Data

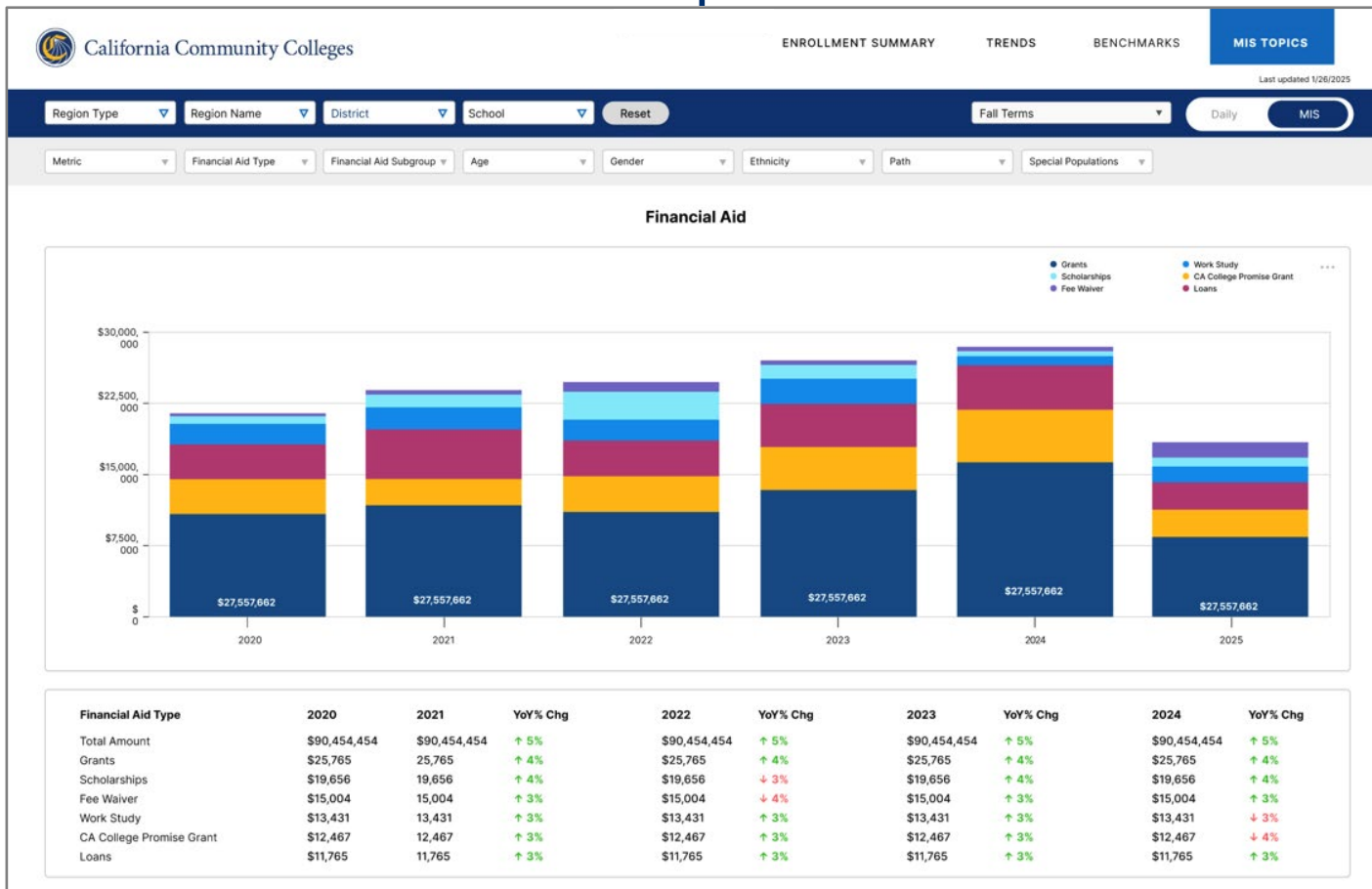
- Program Mapper
- Degree Works dashboards in Insights



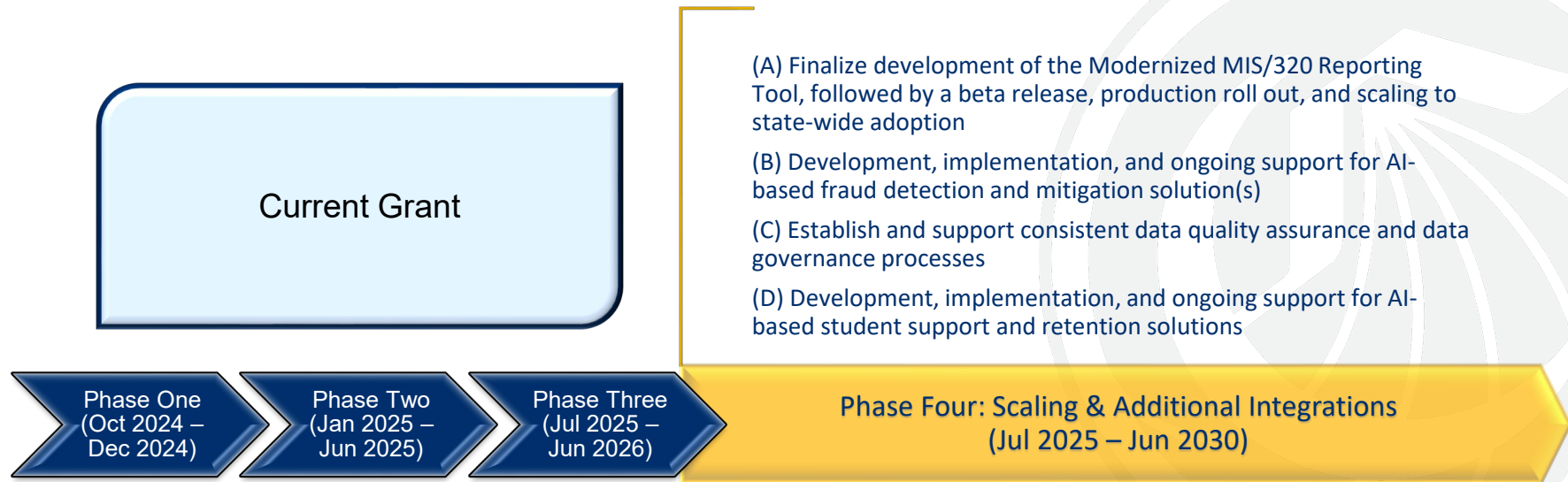
# Wireframes for Additional MIS Topics – Credit for Prior Learning



# Wireframes for Additional MIS Topics – Financial Aid



# Systemwide Scaling: Project Timeline Summary



# Additional Information and Frequently Asked Questions

## Project Website & FAQs

<https://www.cccco.edu/About-Us/Vision-2030/vision-2030-demonstration-projects/common-cloud-data-platform>

For additional information or to get involved,  
please contact the project team at [ccdp@ccd.edu](mailto:ccdp@ccd.edu)





California Community Colleges

Thank you!

[www.cccco.edu](http://www.cccco.edu)