

## Reimagine Apply: Fall 2025 Update

### What is Reimagine Apply?

The vision of the Reimagine Apply transformation is to make the application process quick and easy, ensuring accessibility and equity when applying to the California Community Colleges, ultimately opening doors for career advancement and a brighter future for all students.

### Why Reimagine CCCApply?

The California Community Colleges Chancellor's Office, in partnership with Higher Digital, is leading the transformation of CCCApply into a student-centered, mobile-first application system. This initiative aims to improve the user experience, streamline the application process, support equitable access, increase data accuracy, and mitigate fraud risks. This initiative will result in a new student application that is custom-built to meet the needs of the California Community Colleges system and its students.

### Current Phase: Design & Build

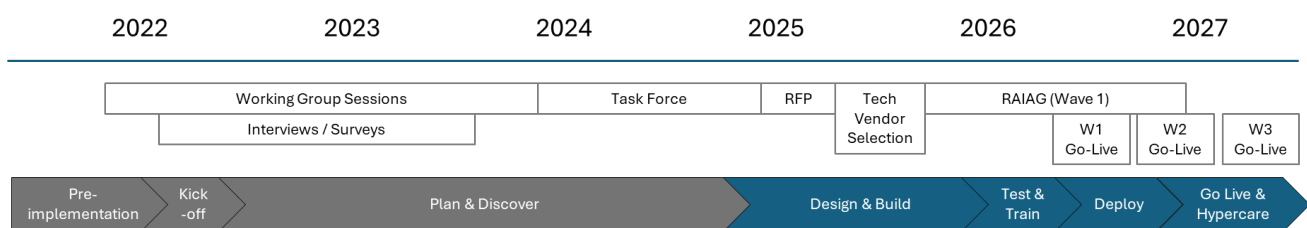
Following the selection of Liaison as the technology vendor, the project is now in the Design & Build phase. This phase includes weekly meetings of the Wave 1 Reimagine Apply Implementation Advisory Group (IAG) and monthly sessions of the steering committee. Eleven Wave 1 districts are actively engaged, representing diverse Student Information System platforms, regions, campus sizes, campus settings, and student services.

### Wave 1 Districts

- El Camino
- Imperial
- Los Angeles
- North Orange County
- Peralta
- San Diego
- San Francisco
- Shasta-Tehama-Trinity Joint
- South Orange
- Ventura County
- Yuba

Watch for recruitment appeals for districts to *join Wave 2* early in 2026.

### Timeline Highlights



### Recent Progress

Higher Digital is providing overall project management.

## Reimagine Apply: Fall 2025 Update

Liaison (technology vendor) is developing the new student application based on the Reimagining Apply Task Force recommendations.

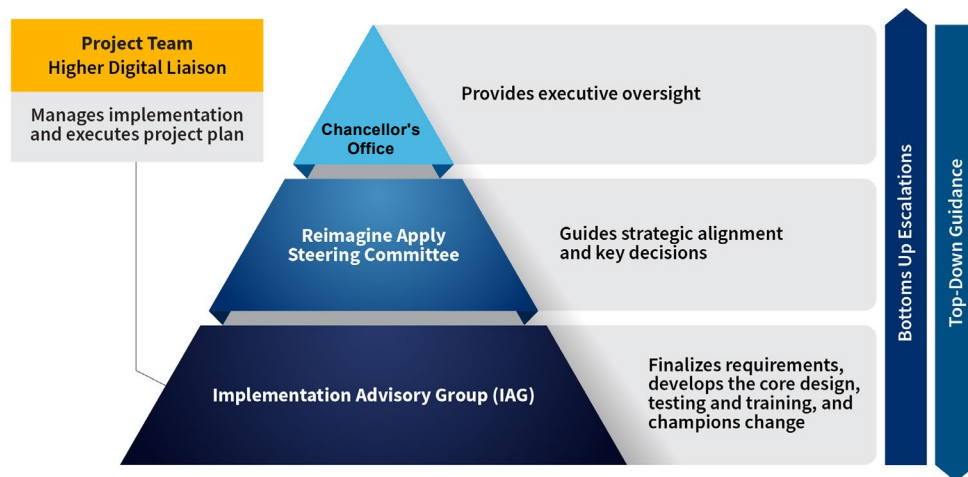
Weekly IAG meetings and monthly Steering Committee sessions guide progress.

The Chancellor's Office is currently updating statewide college leadership associations on progress.

### Implementation Advisory Group (IAG) Responsibilities

The IAG is responsible for advising on the design and implementation of the new CCCApply system by finalizing requirements, developing the core design, testing, training, and championing change. Members will convey information to their respective verticals within all colleges in their district, ensuring broad awareness and engagement throughout the process.

### Reimagine Apply Governance Structure



### How to Learn More

For those not directly involved in the Wave 1 IAG or steering committee, the following resources are available to help you stay informed:

- Chancellor's Office Reimagine Apply [webpage](#) with [feedback form](#)
- Wave 1 districts IAG representatives
- Steering committee members