

## **Bibliography**

### **Proximity as a Predictor of Transfer Rate**

Bahr, P. R., Hom, W., & Perry, P. (2003). Low transfer colleges: Methodology for equitability in identification. Report of the Chancellor's Office of the California Community Colleges, Sacramento, CA.

Bahr, P. R., Hom, W., & Perry, P. (2005, in press). College transfer performance: A methodology for equitable measurement and comparison. *Community College Review*.

Banks, D. L. (1992). External and institutional factors affecting community college student-transfer activity. ERIC Document Reproduction Service, No. ED343630. Arizona State University, Tempe, Arizona.

Cohen, Arthur M. (2003). The community college and the path to the baccalaureate. Paper prepared for the Center for Studies in Higher Education (CSHE) Research Paper Series.

Dougherty, Kevin J. (1992). Community colleges and baccalaureate attainment. *Journal of Higher Education*, 63 (2), 188-214.

Ehrenberg, R. G. & Smith, C. L. (2002). Within state transition from 2-year to 4-year public institutions. NBER Working Paper. National Bureau of Economic Research Cambridge, MA.

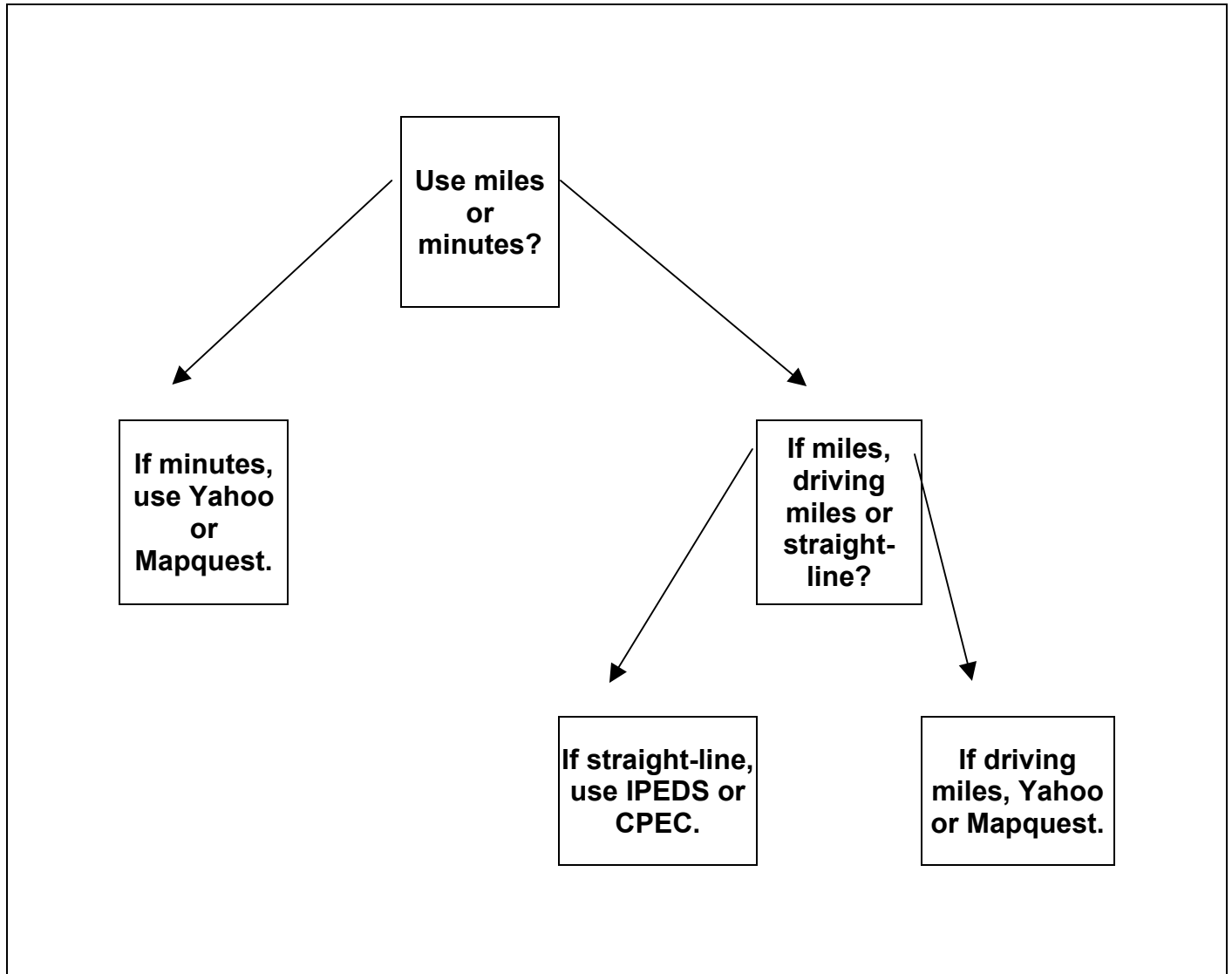
Gelin, F. (1999). Transfer rates: How to measure and for what purpose (a discussion paper). British Columbia Council on Admission & Transfer, Vancouver, B.C., Canada.

Gill, A.M. & Leigh, D. E. (2004). Evaluating academic programs in California's Community Colleges, Public Policy Institute of California, San Francisco, CA.



California Community Colleges System Office  
<http://www.cccco.edu>

## Decision Tree



## Contact Information

LeAnn Fong-Batkin, Analyst  
California Community Colleges System Office  
(916) 327-5886  
[lfongbatkin@cccco.edu](mailto:lfongbatkin@cccco.edu)